

MASTERTON DISTRICT COUNCIL

AGENDA

INFRASTRUCTURE AND SERVICES COMMITTEE

WEDNESDAY 17 MARCH AT 2:00PM

MEMBERSHIP OF THE COMMITTEE

Cr B Johnson (Chairperson)

Her Worship

Cr B Gare

Cr G McClymont

Cr T Nelson

Cr C Peterson

Tiraumaera Te Tau

Cr G Caffell

Cr D Holmes

Cr F Mailman

Cr T Nixon

Cr S Ryan

Ra Smith

Quorum: Seven

Notice is given that the meeting of the Masterton District Council Infrastructure and Services Committee will be held on 17 March 2021 at Waiata House, 27 Lincoln Road, Masterton commencing at 2.00pm.

**RECOMMENDATIONS IN REPORTS ARE NOT TO BE CONSTRUED AS COUNCIL
POLICY UNTIL ADOPTED**

12 March 2021



1

AGENDA

1. CONFLICTS OF INTEREST (Members to declare conflicts, if any)
2. APOLOGIES
3. PUBLIC FORUM
4. LATE ITEMS

FOR DECISION

5. **APPROVAL OF SUBMISSION ON THE CLIMATE CHANGE COMMISSION 2021
DRAFT ADVICE (031/21)** Pages 311-325

FOR RECOMMENDATION

6. **ELECTRIC VEHICLE CHARGING SITE (032/21)** Pages 326-340

FOR INFORMATION

7. **COMMUNITY FACILITIES & ACTIVITIES INFRASTRUCTURE AND SERVICES
UPDATE (033/21)** Pages 341-352
8. **INFRASTRUCTURE UPDATE (034/21)** Pages 353-361

To:	Infrastructure and Services Committee
From:	Angela Jane, Manager Strategic Planning
Endorsed by:	Kathryn Ross, Chief Executive
Date:	17 March 2021
Subject:	Approval of submission on the Climate Change Commission 2021 Draft Advice
DECISION	
Recommendation:	
That the Infrastructure and Services Committee approves the draft submission on the Climate Change Commission 2021 Draft Advice (Attachment 1 to Report 031/21).	

Purpose

The purpose of this report is to seek Council approval of a draft submission made in response to the Climate Change Commission 2021 Draft Advice that was released in January 2021 (Attachment 1 to Report 031/21).

Context

Climate Change Commission: 2021 Draft Advice

On 31 January 2021, the Climate Change Commission delivered their first draft advice to the Government on the actions it must take to reach net-zero by 2050. The draft advice includes:

- The proposed first three emissions budgets and guidance on the first emissions reduction plan, advising the Government on how the emissions budgets could be met;
- Whether our first Nationally Determined Contribution is compatible with contributing to the global efforts to limit warming to 1.5°C above pre-industrial levels; and
- Advice on what potential reductions in biogenic methane might be needed in the future.

The Climate Change Commission is consulting with public from 1 February - 28 March 2021.

Following the consultation, the final Climate Change Commission's advice will be presented to the Government by 31 May 2021. The Government then has until 31 December 2021 to respond. The Government will need to develop an emissions reduction plan which sets out policies and strategies for meeting emissions budgets. Some of the government policies and strategies will most likely outline responsibilities of local government in implementing those policies and strategies.

The Climate Change Commission provides advice to government on climate issues. This draft report is the first suite of advice to government on how Aotearoa can meet its net carbon zero by 2050 goal.

Our Submission

This submission is a joint submission of the Masterton, Carterton and South Wairarapa District Councils.

The joint Wairarapa submission was facilitated by the elected members and Wairarapa iwi representative representing the three Wairarapa councils on the Wellington Regional Climate Change Working Group.

The 2021 Draft Advice: Key Points

Key points from the 2021 Draft Advice are outlined below:

- The Government needs a cohesive strategy that includes water, biodiversity and climate.
- To give effect to the Treaty Partnership, central and local government need to acknowledge iwi/Māori rights to exercise rangatiratanga and kaitiakitanga in a joint plan to reduce emissions.
- Aotearoa must have an equitable and fair transition to a low emissions economy for people and the environment. Impacts will not always be evenly distributed across different groups of society, regions and sectors. To support an equitable, inclusive and well-planned climate transition the Government needs to develop an Equitable Transitions Strategy.
- Priority areas for action include increasing the number of electric vehicles on the roads, increasing total renewable energy, improving farm practices and planting more native trees. Pine trees will still play an important role and could support a future bioeconomy, as bioenergy to replace fossil fuels and as timber for building.
- Aotearoa will need to reduce our waste and create a circular economy where goods are reused instead of going to landfill.

The full advice and evidence reports are available at <https://www.climatecommission.govt.nz/get-involved/our-advice-and-evidence/>

Three Wairarapa District Councils' Submission: Key Points

Overall, the draft advice is a positive, tangible step in the right direction. However, systems and actions need to be put in place to ensure that Aotearoa meets its climate change goals. To succeed, the community needs to support and adhere to the actions, as well as on-going cross-party support and commitment.

The joint submission overall supports Climate Change Commission's draft advice. However, the joint submission also highlights parts of the draft advice that from rural/provincial perspective will require Government's particular attention when it comes to policy development.

The key points from the three Wairarapa District Council's perspective are as follows:

- The government needs to play bigger role in investing and supporting more on-farm advisory services in partnership with the agricultural sectors to enable faster and smoother transition. The current requirements are already putting pressure on existing advisory services (e.g. compulsory farm planning and freshwater regulatory requirements).
- Concerns over the loss of productive land in favour of pine forest plantation, permanent and native forests potentially putting pressure on food production. The Government needs to

develop clear criteria for what type of land is put into forestry, to ensure the security and economic stability of our food production, and with it the viability of our rural communities.

- Rural/provincial areas may be in less favourable position for transport electrification since the more populated and metropolitan areas will take priority and consume the resources and expertise to meet the budget timelines. The Government needs to specifically provide for the transport electrification in rural/provincial areas.
- Instead of calling on ‘genuine, active, and enduring partnership’ we would like to see the Government step up and provide for iwi/Māori rangatiratanga and truly reflect the Treaty of Waitangi in the governance and leadership of Aotearoa transition to low carbon.
- Local government capacity needs to be taken into consideration, particularly at this time of increased complexity, heightened uncertainty and change within our local government context (RMA reform, 3-waters reform, Regional Growth Framework, etc). Partnerships need to take a systems approach and engage in a more holistic collaboration, instead of partnering up on multiple topics putting pressure on already strained resources.

Strategic, Policy and Legislative Implications

The submission aligns with the intent of relevant MDC policies and strategies.

Significance, Engagement and Consultation

The decision has been assessed against Council’s Significance and Engagement Policy and is considered to be of low significance.

Communications/Engagement

No communication or engagement plan is required as a result of this decision to approve this draft submission.

Financial Considerations

No financial implications have been identified as a result of this decision to approve this draft submission.

Implications for Māori

There are opportunities for positive implications and impacts as a result of the Climate Change Commission’s advice and therefore from the decision to approve the joint submission. For example, realisation of ‘genuine, active, and enduring partnership with iwi/Māori’; applying mātauranga Māori to growing new native forests and management of the existing.

Environmental/Climate Change Impact and Considerations

No direct implications as a result of this decision to approve this draft submission.

Next Steps

The consultation period ends on 28 March 2021. MDC staff will submit the attached submission on behalf of the three Wairarapa District Councils. The final Commission’s advice will be presented to the Government by 31 May 2021.

Submission on behalf of the three Wairarapa District Councils to He Pou a Rangi Climate Change Commission 2021 Draft Advice for Consultation¹

Consultation question 1: Principles to guide our advice

Do you support the principles we have used to guide our analysis? Is there anything we should change, and why?

Strongly disagree Disagree Neither Agree Strongly agree

The three Wairarapa district councils commend the Commission for recognising in its guiding principles that the transition, no matter how fast or far, will impact different parts of society, regions and sectors, and that the impacts will not always be distributed equally. It is important that the Government ensures that the policies and direction not only reduce the inequalities but also recognise that not everyone will be able to do as much as they would want to because of their circumstances.

We would have liked to see an overarching Te Ao Māori principle included in the suite of guiding principles.

Consultation question 2: Emissions budget levels

Do you support budget recommendation 1? Is there anything we should change, and why?

Strongly disagree Disagree Neither Agree Strongly agree

The three Wairarapa district councils support the budgets in principle. However, we do not have in house expertise to provide technical advice on the precision and fitness of the budgets to deliver on the vision the Commission have laid out in their advice.

Consultation question 3: Breakdown of Emissions Budget Levels

Do you support our proposed break down of emissions budgets between gross long-lived gases, biogenic methane and carbon removals from forestry? Is there anything we should change, and why?

Strongly disagree Disagree Neither Agree Strongly agree

¹ Note: Submission content will be transferred into the Climate Change Commission's online submission portal.

The three Wairarapa district councils supports the approach to meet emissions budgets based through the balance of emissions and removals. However, we do not have in house expertise to provide technical advice on the precision and fitness of the proposed amounts.

Consultation question 4: Limit on offshore mitigation for emissions budgets and circumstances justifying its use.

Do you support budget recommendation 4? Is there anything we should change, and why?

Strongly disagree Disagree Neither Agree Strongly agree

The three Wairarapa district councils support recommendation 4.

Limiting offshore mitigations for the first three budgets will help drive the behavioural change necessary for the transformation as proposed by the Commission, as well as keep the momentum on developing policies and support needed to reduce gross emissions to meet the budgets.

Consultation question 5: Cross-party support for emissions budgets

Do you support enabling recommendation 1? Is there anything we should change, and why?

Strongly disagree Disagree Neither Agree Strongly agree

The three Wairarapa district councils support the recommendation that the Minister for Climate Change seek the cross-party support. If cross party support is achieved, it would provide more certainty to everyone (policy makers, businesses, citizens) that there will not be sudden changes and inconsistencies in the policy directions as government changes.

Consultation question 6: Coordinate efforts to address climate change across Government

Do you support enabling recommendation 2? Is there anything we should change, and why?

Strongly disagree Disagree Neither Agree Strongly agree

The three Wairarapa district councils support recommendation 2.

Regarding establishing Vote Climate Change, we would like to stress the importance of multi-agency and collaborative governance, as well as collaborative all of government action. In the last few years central government agencies have been much better in working collaboratively across multi-agencies. For matters as complex and intertwined as climate change and with its impacts permeating through every aspect of our society, there is an opportunity to seek novel forms of governance.

However, this should not stop government from having climate change funding and KPIs within each Ministry or Departments, as there will always be a need to incentivise the transition at the all

of government level as well as in particular functions held within individual Ministry or Departments.

Consultation question 7: Genuine, active and enduring partnership with iwi/Maori

Do you support enabling recommendation 3? Is there anything we should change, and why?

Strongly disagree Disagree Neither Agree Strongly agree

The three Wairarapa district councils strongly support recommendation 3.

However, in the past many government policies have strongly called for action to ensure genuine and enduring partnership with iwi/Māori at all levels of government but somehow, all too often, we all fall short of that commitment.

With the transformational vision that underpins the Commission's advice, we would like to see the Government step up and provide for iwi/Māori rangatiratanga and truly reflect the Treaty of Waitangi in the governance and leadership of Aotearoa transition to low carbon.

Consultation question 8: Central and local government working in partnership

Do you support enabling recommendation 4? Is there anything we should change, and why?

Strongly disagree Disagree Neither Agree Strongly agree

The three Wairarapa district councils strongly support the alignment of all the key legislation and policy to enable the envisioned transition to low carbon economy. Any misalignment will present a barrier and add to confusion stifling, in particular, local government to efficiently implement policies.

Over the past few years central and local government have been working more closely on a number of topics. We would like to highlight the need for local government capacity to be taken into consideration, particularly at this time of increased complexity, heightened uncertainty and change within our local government context. Any partnerships need to take a systems approach and engage in a more holistic collaboration, instead of partnering up on multiple topics putting pressure on already strained resources.

That said, climate change provides an opportunity to look at the whole system in which our society operates given climate change occurs in the context of an interconnected world.

We commend the Commission on strongly highlighting that the land, the atmosphere, the people and the oceans are all connected, and expect that the government take a true systems approach

and enable more holistic policy development across ‘the land (and fresh water), the atmosphere, the people and the oceans’ portfolios.

Consultation question 9: Establish processes for incorporating the views of all New Zealanders

Do you support enabling recommendation 5? Is there anything we should change, and why?

Strongly disagree Disagree Neither Agree Strongly agree

The three Wairarapa district councils agree that establishing processes for incorporating the views of all New Zealanders is required and support in principle that the Government provides for an all-inclusive public forum with appropriate resourcing and funding. The resourcing of participatory processes, including the money associated with it, should not be underestimated. Enabling all New Zealanders to participate and be heard, to be part of co-design, requires significant help and support. For example - information, education, language, skills, and the removal of barriers to participation. Mutual trust and understanding must be built.

The funding of these processes must be on top of the funding for the chosen implementation initiatives and incentives that will be needed within the system to change behaviour and achieve the emissions budgets. The funding for a nationwide public forum should be provided by central government (i.e. not rates) to ensure it is sustainable over the 30 year period (and beyond).

We encourage the Government to explore and promote digital platforms that will enable easier access and reach a more diverse range of participants. These cannot be the sole channels for a public forum or participation more generally. Face to face will still be needed.

The benefits of involving people early and actively (for example so that they understand what they need to do and are assisted to develop a sense of personal responsibility) will be undermined if others are not acting and vice versa. We would like to stress that the significant resources need to be deployed for education and information sharing for the general public on how we as individuals can play our part in the transition to low carbon.

Consultation questions 10 & 11: Locking in net zero

Do you support our approach to focus on decarbonising sources of long-lived gas emissions where possible? Is there anything we should change?

Strongly disagree Disagree Neither Agree Strongly agree

The three Wairarapa district councils strongly support the focus on decarbonisation at source. The transformation envisaged in the Commission’s advice can only be achieved if the Government and Aotearoa start the transition as soon as practicable and deal with the decarbonisation at source. However, this will only be possible with significant support, a strong strategic pathway and strong leadership by the Government and sectors.

Do you support our approach to focus on growing new native forests to create a long-lived source of carbon removals? Is there anything we should change, and why?

Strongly disagree Disagree Neither Agree Strongly agree

We would also like to see not only Government's financial support for increasing permanent native forests to provide a long-term carbon sink but also a strategic plan for a roll out as well as support for co-ordination and implementation at regional level. This would allow for leveraging off and connecting with the existing planting programmes at regional and catchment levels. Current funding schemes and levels of support for native afforestation have not been sufficient to drive the change needed as the evidence provided in the Commission's report demonstrates. Incentives should recognise the multiple co-benefits of native forests and indigenous ecosystems in general.

While we are in support of native forests as a long-lived source of carbon removal, we also support the right tree in the right place approach especially where non-native trees perform better e.g. for road stabilisation.

Consultation question 12: Creating a path to 2035

Do you support the overall path that we have proposed to meet the first three budgets? Is there anything we should change, and why?

Strongly disagree Disagree Neither Agree Strongly agree

For transport the pathway is not sufficiently ambitious enough to drive the behavioural and other change required to reduce transport emissions in urban centres. We need to get people out of cars and onto public transport, not simply switch from ICE's to EV's. This requires far more direct action to increase public transport services, to make it more reliable, frequent, accessible etc. Viable alternatives must be in place before the change can happen and justifying the investment in rural/provincial Aotearoa has always been harder than for dense urban cities and conurbations.

With the proposed pathway, we are also concerned that the rural/provincial areas will be picking up too much of the burden, through the ongoing drive to increase plantation forestry over the period to 2035, which will come at the expense of the sheep and beef sector. This means we will be replacing relatively low intensity land use (sheep and beef) with a high intensity land use (plantation forestry). This will result in environmental, economic and social costs for rural communities that will be disproportionate to their proportion of the population.

Consultation question 13: An equitable, inclusive and well-planned climate transition

Do you support the package of recommendations and actions we have proposed to increase the likelihood of an equitable, inclusive and well-planned climate transition? Is there anything we should change, and why?

Strongly disagree Disagree Neither Agree Strongly agree

The three Wairarapa district councils strongly support that the Government has a clear strategy in place to address unequal distribution of the impacts. It is important to acknowledge that not all of the workforce will be mobile and able to reskill and transition into new industries. It is also important to provide support (financial, advisory, expertise etc) for different regions, including local government authorities, that will have different capacities and financial abilities to meet the requirements of the transition. Also see points made in box above and below, regarding need to balance actions and impacts between urban and rural communities equitably.

Consultation question 14: Transport

Do you support the package of recommendations and actions for the transport sector? Is there anything we should change, and why?

Strongly disagree Disagree Neither Agree Strongly agree

The three Wairarapa district councils support in principle the package of recommendations and actions for the transport sector.

However, we are somewhat concerned that low emissions public and shared transport and walking and cycling infrastructure is much easier to implement in metropolitan areas than in rural and provincial areas. Rural/provincial areas like our district that are sparsely populated, with longer distances to travel between townships and urban areas, with a large network of unsealed roads, very limited public transport, and often with a low income rate payer base will find the transition to low carbon transport difficult. We would like the Government to specifically address our low-income and provincial/rural communities to ensure that those more vulnerable are not penalised and/or ostracised.

Roll out of adequate infrastructure will present a financial burden even with central government support. The three Wairarapa district councils are concerned that the required infrastructure (such as electric chargers, servicing of EVs etc) may be slower to roll out since the more populated and metropolitan areas will take priority and consume the resources and expertise to meet the timelines, and are economically more justifiable.

Uptake of light EVs will depend on the cost of EVs and infrastructure. The cost of EVs and availability of electric off road and high-performance vehicles is likely to add to somewhat difficult transformation for rural and provincial areas. The government would need to develop a strategy that covers how the transport transformation will play out for both urban and rural/provincial areas, and what is expected of local government.

The complexity of climate change is all encompassing and the three Wairarapa district councils are concerned that the Government (central and local) will struggle with resourcing, alongside already significant RMA and 3 water reforms, just to name a few.

The transition to low carbon depends on so many different components happening simultaneously, so a dedicated, well-coordinated and collaborative effort across all of the Government is needed.

Consultation question 15: Energy**Do you support the package of recommendations and actions for the heat, industry and power sectors? Is there anything we should change, and why?**

Strongly disagree Disagree Neither Agree Strongly agree

The three Wairarapa district councils support the package of recommendations and actions for the heat, industry and power sectors. We support the Commission's recommendation that the government has to develop a number of strategies to provide clear direction for Aotearoa to transition to low carbon living, including ensuring the security and capacity of our national electrical grid and infrastructure. We have some concern whether there is enough capacity (both central and local government, and sectors) to deliver on a such scale and at pace required for the transformation to occur. It is critical for the Government to ensure reliability and security of electricity supply as we transition into 100% renewable electricity. We also encourage the government to have a strategy for recycling of materials that are currently not recyclable or hard to recycle (e.g. wind turbines blades, plastics) and finding new markets/ uses for recycled materials.

The three Wairarapa district councils support banning coal in general. Burning coal has significant impact on air quality, especially in winter. Currently, councils can ban use of coal through a bylaw however it is more efficient to apply national standard/direction. The proposed Air Quality National Environmental Standard does not go far enough to ban coal.

Consecutive governments have failed to deal with the housing crisis in Aotearoa. The quality of our housing stock is substandard, and energy efficiency even of governmental buildings and property have a way to go. Many funding schemes such as EECA's Warmer Kiwi Homes have been great but nowhere near enough to meet the needs.

The local building sector is concerned that requiring higher efficiency standards (e.g. Green 5 Star rating) will add more cost to already very costly housing stock. There is also opportunity to look into the construction sector and renewable and natural building materials (production forestry could play significant role in a high value timber products). Significant advances, not just for reducing carbon emissions, can be gained by 'greening' the building materials supply chain and addressing construction waste.

We need a concerted effort to accelerate the production and transport of hydrogen for energy requirements in NZ. Incentives and lessons from overseas can be adopted and potentially enable NZ to leapfrog internal substitute technologies. This needs to be looked at in the context of our needs for water resilience too.

Consultation question 16: Agriculture

Do you support the package of recommendations and actions for the agriculture sector? Is there anything we should change, and why?

Strongly disagree Disagree Neither Agree Strongly agree

The three Wairarapa district councils agree with the recommendation to reduce biogenic agricultural emissions through on-farm efficiency and technologies, and that the government supports the alternative farming systems and practices. Regenerative farming has been around for a long while and it is only in the recent years that it is getting more momentum and attention. The Government should consider investing and supporting more on-farm advisory services in partnership with the agricultural sectors to enable faster and smoother transition. The existing sector (particularly the regional councils and CRIs) advisory resources will not be enough to deliver on the transformation required. Current new requirements are already putting pressure on the sector's advisory and farm consultancy services (e.g. compulsory farm planning and freshwater regulatory requirements). The Government should also in partnership with agricultural sectors provide support and advice for farmers to build on the existing environmental image and take the advantage of 'low emissions branding' and promotion to enable greater access to the global market.

Regarding the research and new technologies, the government should look into how it funds research in Aotearoa. The competitive nature of research funding takes significant time away from the research itself. To meet the ambitious timeline and targets Aotearoa will need fast and focused research particularly developing and ground truthing innovative new technologies to reduce GHG in particular biogenic methane in agriculture.

Consultation question 17: Forestry

Do you support the package of recommendations and actions for the forestry sector? Is there anything we should change, and why?

Strongly disagree Disagree Neither Agree Strongly agree

The three Wairarapa district councils support permanent forests as carbon sinks. We agree that the productive forests have a place in meeting our carbon budgets, however, we strongly encourage the Government to ensure that wider environmental degradation from production forestry is brought to minimum. So far, we have collectively failed to effectively deal with the environmental consequences of forest harvesting. We also encourage the Government to enable opportunities for raw logs being processed in Aotearoa instead being shipped overseas adding even more to our transport carbon footprint.

We would also like to see the Government incentivise 'multi-purpose' permanent forest e.g. the permanent forest with mountain bike tracks including educational component about the role of permanent forestry sink.

We would like to draw the Commission's attention that the government needs to develop clear criteria for what type of land is put into forestry. We do not want to see our productive land being permanently lost to carbon farming. We need to ensure the security and economic stability of our food production, and viability of our rural communities.

We would like the Government to look into creating a native forest funding scheme for landowners where 50% of funding comes from either regional or central government and 50% from significant carbon emitters. However, careful analysis would need to be undertaken to prevent offsetting by significant emitters to be the only way of reducing their carbon emissions and putting even more pressure on the productive land.

Consultation question 18: Waste

Do you support the package of recommendations and actions for the waste sector? Is there anything we should change, and why?

Strongly disagree Disagree Neither Agree Strongly agree

The three Wairarapa district councils support the transition to a more circular economy, by minimising waste and emphasising the importance of reuse and recovery making the most of our resources.

1. We support extending producer responsibilities on a prioritised basis. For example if producer responsibility was applied to all plastic this could accelerate its elimination, or at minimum improve resource use and resource efficiency (as well as transferring the cost of collecting, sorting and cleaning materials intended for recycling away from local councils).
2. However, this would need to be worked out to avoid unintended consequences.

To transition to a more circular economy will require significant behavioural change across the board which to occur will need an ongoing investment in education, advertising, incentives, support and regulation. It will require a significant cultural change in adjusting how we live and how we run our businesses, changing our everyday activities and habits. Consumerism is deep seated in our economy and our way of life.

For example, best practice and guidelines have not been as effective in minimising use of plastic in packaging. Left to individual companies to deal with plastic packaging is slow and inconsistent. The understanding of the negative impacts of plastic and micro plastic on our environment and everyday lives is still not widely known.

The comments in the box about utilising Aotearoa grown timber for harvested wood products domestically, rather than shipping unprocessed logs overseas, also provides opportunities for embedding the circular economy principles in the production of higher value wood products.

Consultation question 19: Multisector strategy

Do you support the package of recommendations and actions to create a multisector strategy? Is there anything we should change, and why?

Strongly disagree Disagree Neither Agree Strongly agree

The three Wairarapa district councils support a multi sector strategy. We also seek that the Government consider establishing a central depository of information that would enable less resourced agencies (e.g. in local government sector or small businesses) to access information and expertise e.g. examples of climate change considerations in procurement policy or a guidance on how to use target-consistent long-term abatement cost values in policy and investment analysis.

From the local government perspective, significant savings and efficiencies can be achieved by having free access to expertise and advice. There is a great climate network and informal support across local government with no additional support for coordination etc. However, central government could provide greater support for free access to expert advice.

Consultation question 20: Rules for measuring progress towards emissions budgets and the 2050 target

Do you agree with Budget recommendation 5? Is there anything we should change, and why?

Strongly disagree Disagree Neither Agree Strongly agree

The three Wairarapa district councils agree in principle.

Overall Aotearoa requires a consistent methodology in how we measure our progress. Many local authorities already have community inventories and GHG carbon footprints. However, there are discrepancies in methodologies, and also inventories and footprints come at cost. It is also important that there is a clear direction from central government about roles of local and central government. Data required for inventories and footprints is not as easily accessible. Many councils do not have good data management systems. Anecdotal evidence shows that it can take several months just to collate all required data. We support the recommendation for the Government to develop methods to account for all land use emissions, to incentivise the protection and enhancement of carbon stocks in all forests, as well as non-forest activities. The existing accounting methods that have been applied internationally since 2008 have not served NZ well, as evidenced by our net emissions trend, which has increased far more dramatically than gross emissions since 1990. That is measuring what is actually emitted to the atmosphere. Our accounting methods exclude many of those emissions, and that has not driven policy changes to address the underlying issues. One example is that by choosing only to account for post-1989 forest, there is little incentive to add value the harvested wood. Instead we export raw logs.

Consultation question 21: Nationally Determined Contribution (NDC)**Do you support our assessment of the country's NDC?****Do you support our NDC recommendation?**

Strongly disagree
 Disagree
 Neither
 Agree
 Strongly agree

The three Wairarapa district councils have no inhouse expertise to comment on the changes to NDC to make it compatible with contributing to the global effort keeping warming to 1.5C.

Consultation question 22: Form of the NDC**Do you support our recommendations on the form of the NDC?**

Strongly disagree
 Disagree
 Neither
 Agree
 Strongly agree

No comment. See previous response.

Consultation question 23: Reporting on and meeting the NDC**Do you support our recommendations on reporting on and meeting the NDC? Is there anything we should change, and why?**

Strongly disagree
 Disagree
 Neither
 Agree
 Strongly agree

The three Wairarapa District Councils supports the recommendation on reporting and monitoring.

Consultation question 24: Biogenic methane**Do you support our assessment of the possible required reductions in biogenic methane emissions?**

Strongly disagree
 Disagree
 Neither
 Agree
 Strongly agree

The three Wairarapa district councils cannot knowledgably assess the reliability of the Commission's modelling and assessment. However, the three Wairarapa district councils agree with the Commission's statements in Section 9.3.4 *Important national circumstances that relate to potential biogenic methane emissions reductions* (pg 175). We would like to see that those statements become a part of considerations for reducing biogenic methane. Especially the recent research findings that Aotearoa is one of the most greenhouse gas efficient producers of red meat and dairy products in the world.

We would like to reiterate that the agricultural sector, in particular farmers, be provided with enough support, training, and sufficient time to transition.

To:	Infrastructure and Services Committee
From:	Phil Evans, Senior Advisor Compliance and Projects
Endorsed by:	Kathryn Ross, Chief Executive
Date:	17 March 2021
Subject:	Electric Vehicle Charging Site
RECOMMENDATION	
<p>Recommendation:</p> <p>That the Infrastructure and Services Committee recommends that Council;</p> <ul style="list-style-type: none"> a) Approves the use of the two carparks for electric vehicle use, as identified in Attachment 1 of Report 032/21 and resolves to modify the parking by-law controls accordingly; b) Delegates to the Chief Executive the power to negotiate and finalise a licence to occupy the two carparks. 	

Purpose

The purpose of this report is to recommend that the Council designate 2 car parks for Electric Vehicle Only Parking.

Context

In June 2019, Council adopted a strategy to support the update of electric vehicles. This included supporting private businesses to provide EV charging facilities to their customers and, where possible, provide access to land for the establishment of DC fast charging facilities.

Council has been approached by Power Shop and Meridian to have two car parks on Queen Street redesignated as “EV Only – P120”. This is part of a nationwide roll-out of EV Chargers by Meridian. This will require a Council resolution to change the existing car parking restriction from 120 minutes.

Council has already provided a similar arrangement to Charge Net for their EV charging station on Dixon Street. Meridian will need to install a charging unit on the public footpath.

Council officers have discussed alternative locations for the charge station with Power Shop including the use of the Kuripuni carpark. This was due to some concerns about the proposed location with the charger on the public footpath.

Power Shop desires to have the charger immediately outside their retail premises, for promotional reasons, rather than in a lower-profile location.

The images that have been supplied by Meridian show that the charger is low profile and will not obstruct the footpath. Additionally, the power supply can be provided underneath the existing

veranda, meaning that there is no need to dig up the footpath. On that basis, officers support the proposed location.

Analysis and Advice

Council’s adopted strategy to support electric vehicle uptake includes facilitating charging and fast charging units for private businesses. The proposal is consistent with this objective.

Issues of access to the footpath and maintenance can be dealt with through the licence to occupy. This has been effective with the Charge Net fast charger that was installed on Dixon Street in 2017.

Council officers have had several discussions with Power Shop about the location of any EV charger. This included placing the chargers in the Kuripuni car park on Walton’s Avenue or at the Power Shop parking area on Dixon Street. However, the intention by Power Shop is to use the charger for promotional as well as practical purposes. Additionally, it does need to be close to a power supply and this is not currently available at the Walton’s Ave or Dixon St sites.

Council’s strategy has been to support the provision of these facilities by private companies and has previously (2019) supported a facility for Charge Net on Dixon Street.

The proposal from Meridian is to install an EV charger on the footpath outside the Power Shop premises at 427 Queen Street. Images supplied to Council (see Attachment 1) show that this is to be located between the veranda supports and does not obstruct the footpath.

The Power Shop charger is to be supplied by Meridian Energy as part of the nationwide roll out by Meridian. The agreement will be with Meridian.

All costs associated with the installation of the charger, repainting of the car parks and reinstatement of the same if the charger is removed, will be met by Power Shop and Meridian. There will be no costs to Council.

Options Considered

A summary of the options considered is included in the table below.

Option		Advantages	Disadvantages
1	Support the Proposal	Provides another EV charging facility for the Masterton area at no cost to Council. Partners with local and national businesses.	Loss of two general use car parking spaces from the general parking inventory.
2	Reject the Proposal	No loss of general use car parks.	No additional EV Charging facilities. Inconsistent with Councils adopted EV Policy.
3	Support the Proposal in part and reject it in part.	No Advantage.	

Recommended Option

Option 1 is recommended. This ensures that Council will meet the objectives of the EV Vehicle Strategy and facilitate a local business initiative.

Summary of Considerations

Strategic, Policy and Legislative Implications

As noted above, facilitating public EV Chargers is an objective of the Council's adopted strategy. A Council resolution to designate the two car parking spaces as "EV Only" will be required.

Significance, Engagement and Consultation

This is not considered significant under the Council's policy and no specific engagement or consultation is required.

Communications/Engagement

The provision of a new charging station will be publicised by Power Shop and Meridian Energy.

Financial Considerations

There are no financial implications for Council. All costs will be met by Power Shop and Meridian Energy.

Implications for Māori

There are no particular impacts for Māori in this recommendation.

Environmental/Climate Change Impact and Considerations

The support of EV charging facilities is consistent with Council's climate change policy direction.

Next Steps

If the Council adopts the recommendation, Power Shop and Meridian would be advised and a licence to occupy will be issued. Power Shop and Meridian will then proceed with the installation at their earliest opportunity.

Public EV Charging Proposal

Masterton District Council

December 2020

Emerging Markets and Innovation Team

Meridian Energy

COMMERCIAL - IN CONFIDENCE



Meridian.

Masterton

Masterton/Whakaoriri - New Zealand best little city.



Transport contributes significantly to carbon emissions. Supporting electric vehicle charging is a proven way to increase EV uptake and therefore reduce the impact of carbon on the environment.

Masterton District Council has adopted the EV Strategy prepared for the Wellington region. MDC has been strategic in selecting key measures that will specifically work for the area.

EV charging stations are not only a tangible way to take climate action by helping to encourage low emission transport options but they fit well under the measures agreed to by MDC.

EV charging on Queen Street

Meridian is proposing a solution where we fund the installation of, own and operate a public charging station through our brand Powershop on MDC land.

The AC charger we'd like to install is capable of charging two vehicles at the same time.

The establishment of a public EV charging station will help to:

- ☞ Support MDC's sustainability efforts; specifically measures six, seven and 17 of the Wellington Regional EV Strategy
- ☞ Support electric vehicle uptake by locals
- ☞ Meet the demand for EV charging in the area
- ☞ Encourage and increase low emissions transport within the region
- ☞ Complement existing rapid DC charging in the region

Benefits for Masterton residents:

- ☞ Convenient top up while out and about
- ☞ Free charging while parked
- ☞ 24/7 support should they need assistance

AC charging

A note on AC and DC charging

AC charging is recommended in locations where drivers are typically parked for more than 30 minutes (examples below). Designed to service locals they are ideal for sites such as retail precincts, council and community facilities, cafes and restaurants. DC chargers provide drivers with a fast top up to keep them moving.



The Tannery Mall,
Christchurch



Hanmer Springs Thermal
Pools, Hanmer



Ngai Tahu Properties Tower Junction
Retail Precinct, Christchurch

Proposed site

Powershop have their main office in Masterton at 427 Queen Street. We are looking to secure access rights to two carparks outside the building and convert these to EV charging car parks.

What will be delivered:

- ☑ 1 x AC charging station, with dual charging ports
- ☑ Car park ground marking, signage and bollards
- ☑ Retain existing P120 parking limit
- ☑ Compatible with all electric vehicles and meets NZ public charging standards
- ☑ Proven AC charging stations, imported and endorsed by Meridian Energy

Indicative illustration of charger look (to scale)



427 Queen Street



Meridian's service & high level terms

EV drivers charge for free for an initial three-year period.

Meridian would want to secure an exclusive access license for the two car parks for ten years with the right to renew for another five years.

Meridian will manage and continuously improve the driver's charging experience and ensure that every charger on our network is safe and reliable.

Key components include:

- ☐ EV driver support, fault management, customer queries, etc
- ☐ remote monitoring of charger health, reporting and analytics. We will share insights of the charging station's utilisation
- ☐ annual inspections, proactive and reactive maintenance and management of field service staff
- ☐ marketing and promotion of the charging services to EV drivers which supports journey planning via apps etc

Benefits of Meridian's charging network



Experience. Your specific solution delivered and operated by an experienced in-house team that has deployed over 100 public, fleet and home EV charging stations.

Support. We have a Christchurch-based contact centre providing customer and driver support.

Stability. We're here for the long term and committed to extending our network as electric vehicle numbers increase in New Zealand.

Easy implementation. We install, own and operate the charger.

Meridian PublicLine AC charger installed at
NZ Blood Service, Auckland

About Meridian

At Meridian, all the electricity we generate comes from 100% renewable sources – wind, water and sun. We're New Zealand's largest renewable electricity generator and supply around 30% of the country's electricity.

We're passionate about electric vehicles and the opportunities they present to make a real difference for the future of our environment. We're aiming to have 100% of our passenger fleet fully electric by the end of 2020.

Our Electric Car Plan is designed especially for EV drivers charging up at home.

And we work with like-minded businesses to install public EV charging stations across the country, further enabling the uptake of EVs.

Meridian PublicLine AC charger installed at Christchurch Adventure Park



Next steps

01

Masterton District Council to review and consider this high level proposal – questions and feedback are welcome.

02

MDC to advise on securing access license for two car parking spaces outside the Powershop office on Queens Street.

03

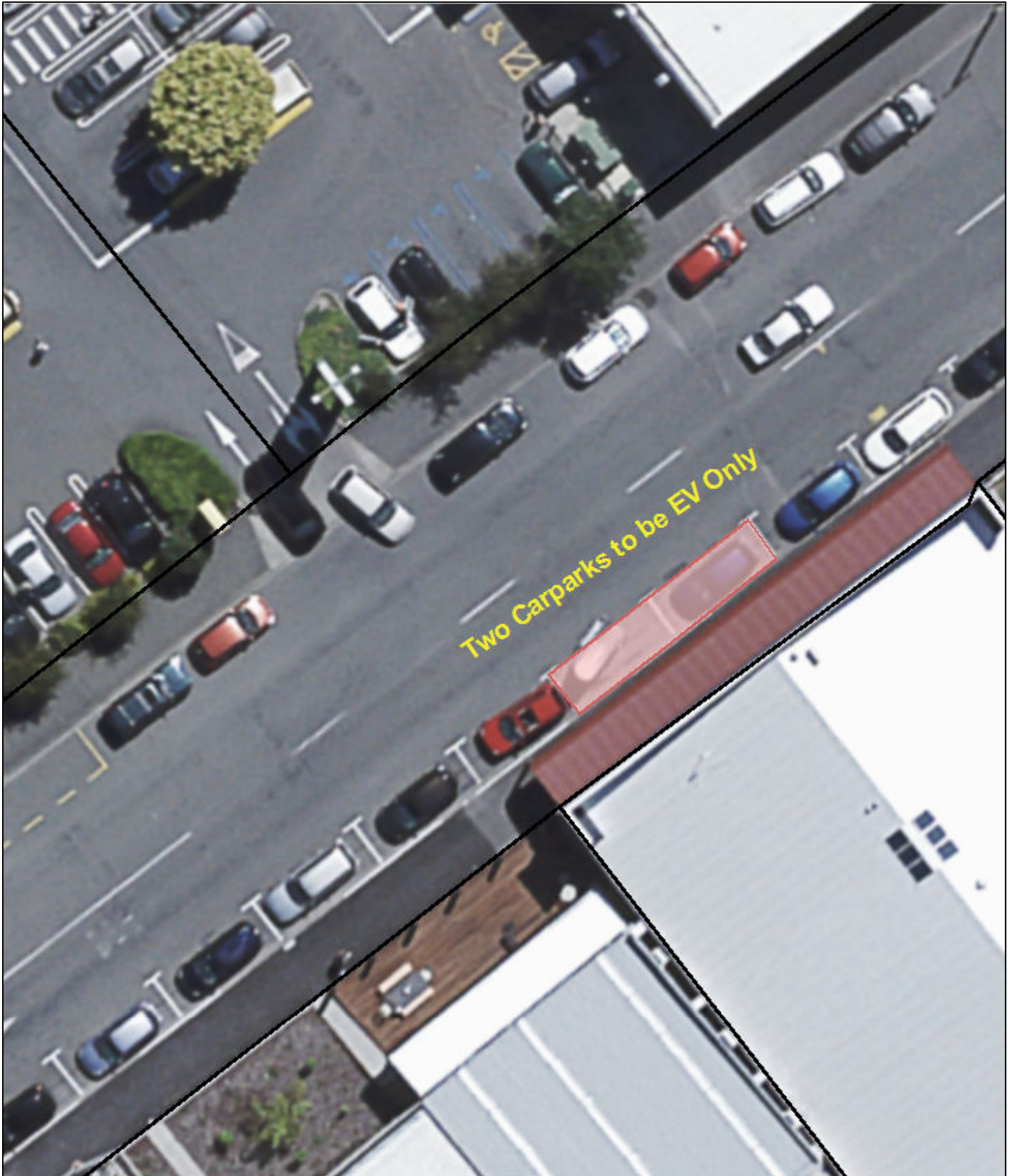
Both parties to agree terms then Meridian to arrange for all the installation work to be done.

Endorsement



“Christchurch Adventure Park is committed to being a socially and environmentally sustainability operation, so installing EV chargers at our site was something we were very keen to pursue. By partnering with Meridian Energy, it was both easy and affordable. The Meridian team designed a solution that was right for us, removed the high up-front costs, took care of the installation process, and continue to manage the service for us. It couldn’t be easier.”

ANNE NEWMAN - GENERAL MANAGER, CHRISTCHURCH ADVENTURE PARK.



March 12, 2021

1:250

- Masterton Property
- Carterton Property
- South Wairarapa Property

0 2.75 5.5 11 Metres

DISCLAIMER
The Masterton, Carterton, and South Wairarapa District Councils accept no responsibility for actions or projects undertaken or loss or damages incurred, by any individuals or company, or agency, using all or any of the information presented on this map. The Councils do not provide interpretation of this information or advice on how to interpret, or utilise this information. Your own independent and appropriate professional advice should be sought. The information displayed on this map may contain errors or omissions or may not have the spatial accuracy required for some purposes.

To:	Infrastructure and Services Committee
From:	Andrea Jackson, Manager Community Facilities and Activities
Endorsed by:	Kathryn Ross, Chief Executive
Date:	17 March 2021
Subject:	Community Facilities & Activities Infrastructure Update
INFORMATION	
Recommendation:	
That the Infrastructure and Services Committee notes the contents of Report 033/21.	

Purpose

The purpose of this report is to provide the Infrastructure and Services Committee with an update on key projects and summary of progress since the last report, including highlights and any new issues.

Key Projects Currently Underway – Summary

Community Facilities and Activities have a capital budget of \$9,142,904 for the 2020/21 year.

Our larger financial projects will be reported via the Projects Office, Assets and Operation's report:

- Masterton Town Centre Revamp; \$1.4million
- Skatepark Upgrade; \$1.3million

The team also have operational projects on the go:

Housing

- 2 pensioner units are currently under renovation, a one-bedroom standalone unit at Laurent Place (with new tenant ready to move in), and a bedsit unit at Panama that has just been vacated.
- General rental property 192 Chapel Street is currently having some refurbishment work done ready for advertising for new tenants in March.
- General rental property 767 Upper Plain Road has had Dux Quest plumbing removed throughout the building with new plumbing in bathroom, toilet, and laundry completed. This work was required as the product been identified as prone to failure with insurance impacts on the building if not replaced. Note this property is tenanted.

Public Conveniences

- An upgrade of the pump-chamber of the Henley Lake Toilets will be commencing late March. Engineering design for this activity was completed in 2020.

Library

- Some additional pinning of the concrete block elements above the automatic doors is being scoped. Work includes assessing tile artworks above doors to preserve and protect them. The library was strengthened to 70%NBS in 2019.

Belgravia Leisure and Recreational Services - Contractors

- ***Trust House Recreation Centre Contract***

The promotion of the \$1 entry to the pools finished on 24 January 2021. Well received by the community and visitors to the town, there were over 10,000 customers during the period. Overall visits to the facility were slightly increased on the same time in 2020 with facility memberships slightly down. As authorised by Elected Members, staff are working with Belgravia Leisure on the contract review. The contract expires 30 June 2022 and the team are working on a risk share contract extension from 1 July 2022.

- ***Parks and Open Space Maintenance Contract***

Mowing ceased in January with resource diverted to watering and weed eating. The drought and water restrictions continue to present a risk with mitigation plans in place if required. Touch Rugby and Wairarapa Cricket representatives have complimented Recreational Services on their work at McJorrow Park and the Oval, with Cricket also noting the openness by parties to discuss options has been valuable. The team have undertaken a six-monthly review of budgets, planning is on track and there are no significant financial risks to highlight.

- ***Mawley Holiday Park Contract***

As previously reported, during this financial year the holiday park has benefitted from the restrictions on international travel. Despite the recent alert changes and cancellation of local events, the operator still appears on track to modestly exceed the yearly revenue target.

Civic and Youth Awards

The Awards were initially scheduled 16 February 2021 but were postponed due to COVID-19 Alert Level 2 lockdown. They have been rescheduled to be held on 15 March and a plan is in place to run within Alert Level 2 restrictions.

Waifest - Waitangi Day Festival

Waifest 2021 saw over 2,000 people come together to celebrate Waitangi Day at the Queen Elizabeth Park Oval. This was slightly down on other years. Waifest had a range of free entertainment, including bouncy castles, merry-go-round, and chair-o-plane rides for the tamariki to enjoy. Waifest hosted over 30 food and community outreach stalls, which included five community fundraisers. This year's line-up showcased a range of amazing local and NZ musicians including rising stars, Sianne Dougherty, Majic Paora, Israel Starr and special guest Caleb Haapu from Sons of Zion. Weather conditions were perfect, and the crowd was in amazement when Kiwi icon Scribe opened for headliner Lion Rezz.

Community Development Transition

The Community Development team continues to work on ensuring the best outcomes for the community development transition currently underway. Planning is ongoing for the new in-house team functions and structure.

The Neighbourhood Support Coordinator is currently hot desking from Waiata House and will fully transition in the next month. There is currently one vacant position in the Connecting Communities Wairarapa service agreement, which finishes on 30 June 2021. The Community Development Manager position has been vacant since 31 December 2020 and the Youth Development Coordinator's role has been vacant since the end of January 2021.

Staff are working on a delivery plan for the April school holiday program, and beyond which will involve a delivery partner.

Te Hōkai Nuku - Positive Ageing Strategy

Work on the Positive Ageing Strategy's Implementation Plan continues across the three Councils. The below has been achieved:

- Training dates are set for customer services training for front-facing staff when working with older persons. There is a session being hosted by Masterton District Council on 18 March 2021. There is a further session in Carterton which will be open to Masterton District Council staff.
- The second quarter (November 2020 – January 2021) report for the Positive Ageing Strategy is now complete. This is a compilation of work completed by council staff that contributes to the Positive Ageing Strategy. The status on the goals is in the following tables:

Masterlon District Council Te Hōkai Nuku/PAS August - October 2020				Implementation plan projects			
				Action for 20/21	Status at October 2020	Status at Jan 2021	
Goal 2: Communication and Engagement	2.1	Targeted communication and customer services for older people from Councils	Kiwisaver paid to MDC staff over 65 in permanent roles. Transition to retirement policy in place.	Ongoing	Proactively support a Council ageing workforce	HR policy to support ageing workforce	Briefing paper written
			Customer service training on communicating with older people		Identify provider and provide training to customer service staff	Provider identified and scheduled for Feb 2021	Trainer and dates scheduled for 18th and 25th March
			Council website review from the perspective of older people		Identify provider and conduct review	Potential providers identified and costs scoped. Website review scheduled has included user testing with people from Digital Seniors and CCS Disability Action	
	2.2	Regular, timely and appropriate advice to Councils on matters relating to older people			Ensure good practice community advice systems staff and elected members	Research on good practice for advice to elected members and officers from older persons	
						Review of existing Council stakeholders/advisory groups for effectiveness in providing advice from older persons	

Masterton District Council Te Hōkai Nuku/PAS August - October 2020				Implementation plan projects			
				Action for 20/21	Status at October 2020	Status at Jan 2021	
Goal 3: Transport	3.1	Advocating for improved rail and bus services and linked connections		Advocate for improved bus services and linked connection	Establish key contacts and information		
	3.2	Safe and accessible journeys on cycleways and footpaths	Roading met with CCS Disability Action in this quarter	Roading contractors prioritise areas of greatest use by older people are prioritised for improved safety and accessibility	Create a 'hotspot map' of the high-density populations of older adults and places they visit (eg Medical centres, CBD)	Hotspots identified and mapped with Roothing Manager	Complete
					Roothing contracts take account of these		
	3.3	Sufficient disabled and accessible parking		Save a Space campaign https://mstn.govt.nz/media-release-drivers-urged-to-think-of-others-when-parking/	Ensure appropriate levels of disability parking	Conduct a demand analysis for car parking	
	3.4	Age-friendly CBD planning	PAS added to PM templates		Ensure appropriate advice from older people needed to ensure CBD planning is age-friendly	CBD Focus group recommendations	CCS Disability Action reviewed plans prior to PASC (2nd iteration)

Masterton District Council Te Hōkai Nuku/PAS August - October 2020				Implementation plan projects		Action for 20/21	Status at October 2020	Status at Jan 2021
Goal 4: Cultural Diversity	4.1	Strong relationships and partnerships between Iwi, hāpu and whānau and Council			Strengthening relationships with Māori	Iwi Governance MOU Reviewed		
						Establish relationships with a wider range of Māori community groups		
	4.2	Cultural competency and Treaty knowledge/ training for all staff and elected members			Treaty of Waitangi and cultural competency training for all staff and elected members			
	4.3	Supporting and capacity building of cultural groups and events	Community Events fund		Support bi-cultural and multi-cultural activities	Stocktake completed which includes role of and participation by older people in events - identify gaps		
Goal 5: Housing	5.1	Housing development that considers the needs of older people			The District Plan and Regulations teams are informed of and take account of the needs of older people	Results of the Positive Ageing Strategy research shared with asset managers		
						Updated with next census information		
						Insights integrated into future plans		
5.2	Sufficient social housing stock for older people	Refit of one private unit at Panama Village to install handrails in porch, living area and bathroom.			Wairarapa Economic Development Strategy Housing goal includes the needs of older people	Develop a position statement, strategy and plan		
						Advocating land available for disposal/development		
					Support the WEDSAP Housing Plan			

Infrastructure Projects

Properties and Facilities							
Project Name	Project Lead	This month	Next milestone	Budget	Risk	Council Decision Points	Completion Date
Douglas Villa Clubroom Repairs	Brett Tickner	Final works on Cladding replacement Painting of exterior surfaces Working with the Douglas Villa RFC to identify alternative funding streams for a contribution towards the accessibility ramp	Completion of exterior painting and cladding works	Provision of \$220,000 for 2019-20 in Annual Plan for all sports facility improvements \$15,315 In 2019/20 Annual Plan for sports building renewals	Project budget risk – Budget covers recladding and strengthening but not ramp and changeroom upgrade. Reputational risk from public perception of over-investment in facility	March 2021 revised project plan, scope of works and costs to Council	December 2021 (project schedule to be confirmed)
Memorial Park Grandstand	Brett Tickner	Preparation of project brief Development of user group questionnaire	Procurement of design and scope of works developed with option analysis for Council Meeting with all user groups	Provision of \$500,000 in 2020/21 Financial Year	Budget – scope of works to be defined and costed Disruption to users while work is in progress – phased approach anticipated	Project plan developed and elected members updated April 2021	December 2021 (to be confirmed)
Castlepoint Toilets Upgrade	Brett Tickner	Certificate of Code Compliance issued Report finalized and invoice to MIBE Close out of project		\$296,367 project cost \$120,000 in 2017/18 Annual Plan \$111,470 from MBIE TIF Fund	Disruption to public during construction Environmental impact on surrounding plantings Delays in supply of materials or products due to supply-chain	Progress reporting to Council via Infrastructure and Services Committee	Facility was opened December 2020


Properties and Facilities							
Project Name	Project Lead	This month	Next milestone	Budget	Risk	Council Decision Points	Completion Date
				\$315k CAPEX in 2019-20 budget for Castlepoint toilet facilities	disruption. This is causing minor project slippage		
Reserve Lease Review	Paula Beasley	75% draft of lease policy incorporating preliminary feedback from operational staff.	Senior Leadership review of complete draft lease policy and reserve lease procedure.	Operational cost	Negative publicity from clubs and other leaseholders who have historical or expired agreements that do not comply with current legislation and do not wish to move to new agreements Project slipping due to lack of internal resource		April 2021

Parks and Open Spaces							
Project Name	Project Lead	This month	Next milestone	Budget	Risk	Council Decision Points	Completion Date
Percy's Reserve Upgrade	Odell Sugrue	Picnic table installed	Winter planting of trees	Provision of \$50,000	Disruption to public due to restricted access of vehicles		June 2021
Henley Lake Overflow Carpark Upgrade	Odell Sugrue	Consulted with contractor and carpark area levelled	Topsoil and make ready for grassing April 2021	\$30,000	Reduced parking for events during works		June 2021

351

Parks and Open Spaces							
Project Name	Project Lead	This month	Next milestone	Budget	Risk	Council Decision Points	Completion Date
Queen Elizabeth Park Furniture	Odell Sugrue	Furniture ordered	Install purpose-built recycling bins in parking areas May/June 2021 Replace old furniture May/June 2021	\$40,000	Disruption to public due to work in parking areas		June 2021
Parks and Open Space Strategy (POSS)	Andrea Jackson	Draft Strategy was approved for public consultation. Consultation closes 10 March 2021.	Staff will collate and analyse submissions and feedback.	Originally a \$0 budget, staff time required due to change in personnel, now to be resourced externally Project to be funded by salary savings	Failure to complete work will impede asset management planning and property strategy development	Elected Members to adopt final Strategy in April/May 2021	May 2021

Community Wellbeings							
Project Name	Project Lead	This month	Next milestone	Budget	Risk	Council Decision Points	Completion Date
Community Development Framework	Aaron Bacher	Finalising draft prioritisation matrix	Final draft framework to Senior Leadership Team for approval followed by Elected Member workshop on 14 April 2021	Offer of Service cost \$26,250 Originally a \$5,000 budget with staff time required. Project	Mixed understanding of community development and community-led development	Include in Chief Executive report for information to Elected Members	June 2021

Community Wellbeings							
Project Name	Project Lead	This month	Next milestone	Budget	Risk	Council Decision Points	Completion Date
				to be funded by salary savings			
Community Development Transition	Aaron Bacher	Book initial meeting post-elected member workshop to confirm resourcing requirements	Implementation of decision including Transition Plan to bring CCW service delivery contact in-house	Originally a \$0 budget, staff time required. Project to be funded by salary savings	Council objectives are unclear and subject to change, this review could result in different delivery model than current	Report back to Council as part of LTP process	June 2021
	Alicia Todd and Kata Ngatai	<p>There has been a slow start to Term 1 due to our contact teachers who have had other priorities at the start of the year, and twice going into COVID-19 Alert Level 2 which deterred a few groups.</p> <p>To date, only Shift Your Mind and lunchtime Shift has started.</p> <p>The Shift Foundation has been provided with programme details for Terms 3 and 4 to enable funding to be secured.</p>	<p>All other programmes established.</p> <p>Begin the establishment of the Summer Sports Jam dates and get registrations out to teachers to start organising.</p>	<p>Staff salaries covered by external funding</p> <p>Funding successfully secured until 30 June 2021 for 2 FTE</p> <p>Project delivery budget is shared across three Wairarapa Councils where funding has not been found</p>	Any changes in COVID-19 Alert Levels may affect delivery of programmes		June 2021

Green: on target or low risk

Orange: slightly off target or some risk

Red: Significantly off target or Significant Risk

To:	Infrastructure and Services Committee
From:	David Hopman, Manager Assets and Operations
Endorsed by:	Kathryn Ross, Chief Executive
Date:	17 March 2021
Subject:	Infrastructure Update
FOR INFORMATION	
Recommendation:	
That the Infrastructure and Services Committee notes the information contained in Report 034/21.	

Purpose

The purpose of this report is to provide the Committee with an update on key infrastructure projects and areas of programme focus.

Corridor Management

Masterton District Council received 81 corridor access requests for the two-month period and invoiced out 66 approved requests. There has been no traffic management audit completed.

There was one non-conformance notice issued.

14 Traffic Management Plans (TMP) for events and other such non-excavation activities were approved. 91 work completions were completed, no two-year warranty inspections were completed.

Activity Reports

PROJECTS/PROGRAMME WORKS						
ACTIVITY	PROJECT LEAD	PROGRAMME PROGRESS	COUNCIL DECISION POINTS	BUDGET	COMPLETION	RISK
ROADING						
Roading Maintenance	Kaine Jaquiere	Footpaths: 80% renewals programmed completed 20/21.	June Annual Plan adoption	\$620,000	June 2021	Resourcing Weather Covid 19 alert level
		Reseals: Preseal repairs and sealing design completed. Reseals 40% completed and on track with the budget.		\$1,400,000	June 2021	
		Road Remarking: Ontrack, programmed March		\$440,000	April 2021	
		Kerb and channel renewal (Renall & Cornwall Streets.)		\$180,000 On budget	June 2021	
Pavement Rehabilitation	Kaine Jaquiere	Ontrack: Awarded to Higgins in November Two years - sealed and unsealed sites 2021 – Te Ore Ore, Westmere and Mangapurupuru Roads.	June Annual Plan adoption	\$1,448,826 Yr 1 \$2,241,346 Yr 2/3 On budget	June 2022/23	Resourcing Weather Covid 19 alert level
Pedestrian Safety Improvements	Kaine Jaquiere	Contract awarded to Higgins. Church/Colombo Road intersection, Renall Street kerb & channel and SH2 Opaki pedestrian footpath. Now programmed 2021.	June Annual Plan adoption	\$558,000 On budget Service relocation variations	Church Street & Colombo Road <u>January 2021</u> , Renall Street <u>March 2021</u> ,	Services TMP Covid 19 alert level Delays due to contractor resourcing

PROJECTS/PROGRAMME WORKS						
ACTIVITY	PROJECT LEAD	PROGRAMME PROGRESS	COUNCIL DECISION POINTS	BUDGET	COMPLETION	RISK
		Colombo/Church Street intersection improvements are completed.			Opaki Road <u>July 2021.</u>	
Goodlands Bridge - Masterton Castlepoint Road	Kaine Jaquierey	Procurement: Tender docs prepared and currently advertised on GETS to improve road safety on and around Goodlands Bridge (Masterton Castlepoint Road).	Award	\$260,000	July 2021	Resourcing (contractor availability) Weather Covid 19 alert level
QE Swing Bridge	Kaine Jaquierey	Design - Wagner's approved to design and supply materials. A separate contract has been prepared for installation. Tender awarded to Riverside Construction. Awaiting delivery of materials, estimated start date in March.		\$190,000	Installation - March 2021 with completion in May.	Budget Availability of resources & materials Covid 19 alert level
Colombo Road Bridge Renewal	Kaine Jaquierey	Tender prepared: Design and build style contract. Geotech groundworks investigations completed. RLTP variation approval obtained on 24/09/2020. A funding application has been forwarded for NZTA inclusion and prioritisation in the next	Contract award – 2021/22	\$3 million	Construction in 2021/22	Central Govt funding Availability of resources Covid 19 alert level

PROJECTS/PROGRAMME WORKS						
ACTIVITY	PROJECT LEAD	PROGRAMME PROGRESS	COUNCIL DECISION POINTS	BUDGET	COMPLETION	RISK
		NLTP, finalised funding approvals will be notified to TAs in Jun/Aug 2021. No approval granted.				
Essex Street Car Park	Kaine Jaquiere	Contractor secured: PCL Limited. Awaiting a confirmed start date, currently estimated as April 2021.	Contract awarded: November 2020	\$604,129.00	Construction in 2021	Availability of resources Weather Public interest and disruption Covid 19 alert level
Under Veranda CBD Lighting, LED Upgrade	Kaine Jaquiere	Procured Alf Downs Street Lighting Limited to scope work programme and prepare lighting design to upgrade and infill CBD under veranda lighting.		\$180,000	Installation underway, completion June 2021	Covid 19 alert level Availability of resources
WATER						
Henley Lake Resource Consent	Phil Evans	Consent renewal: Resource consent application lodged with GWRC for processing. Inlet automation: Completed.		\$80,000	February-March 2021	Non-compliance with existing consent

PROJECTS/PROGRAMME WORKS						
ACTIVITY	PROJECT LEAD	PROGRAMME PROGRESS	COUNCIL DECISION POINTS	BUDGET	COMPLETION	RISK
Opaki Water Race	Phil Evans	Consent renewal: To be amended. Council decision to close water race in 2026. Amended renewal application lodged February 21.	March	\$15,663 Scope to be confirmed	Amended application lodged February 2021.	Non-compliance with resource consent
Water Treatment Plant	David Hopman	Sludge disposal project: Further information has been requested by GWRC for the consent approval. Addition on-site storage to be utilised for this summers sludge.	Contract award: To be confirmed	\$251,200	Construction delayed until Summer 21/22	Need to dispose sludge to landfill if consent not progressed.
Homebush WWTP	David Hopman	Old pond decommissioning: Consent application submitted. Irrigation project: Procurement and installation to be completed once lease arrangements finalised.	Contract award: To be confirmed	\$200,000 On budget \$300,000 On budget	Site preparation, planting 2021/22 Irrigation installation June	Decision making Resources
Water Meters	James Li	Installation delayed due to COVID-19 with the first meters installed on 10 February 2020. 6,662 meters installed to end of February 2021, plus a number of households under sharing supply, this equates to 74% total progress.	Confirm water Charges: September	\$2,000,000 On budget	Boundary meters installed: October 2020 Shared meters installed: Aug/Sep 2021	Public uncertainty of shared supply and cost of water. COVID-19 alert level

PROJECTS/PROGRAMME WORKS						
ACTIVITY	PROJECT LEAD	PROGRAMME PROGRESS	COUNCIL DECISION POINTS	BUDGET	COMPLETION	RISK
Three Waters Renewal Projects	James Li	Installation: Planned renewals work now under contract.		Water: \$1,640,000 Sewer: \$1,126,400 Stormwater: \$337,920 On budget	June 2021	Potential delay and cost increase to next year's renewal programme. COVID-19 alert level
Water Treatment Plant Upgrades	David Hopman	Includes new pond aerators, control system and electrical upgrades, bulk water tanker supply terminal, fish inlet screens and design work for future water resilience projects. Specifications are currently in development.	Contract awards: To be confirmed	\$1,000,000	March 22	Availability of resources
Rural Water Treatment	David Hopman	Includes point of use filters and UV disinfection on rural halls and Council water supply schemes. Specifications are currently in development.	Contract awards: To be confirmed	\$1,300,000	March 22	Availability of resources
Treated Water Storage	David Hopman	Provides for 1,000 m3 treated water storage in Nikau Heights, Lansdowne. Specifications are currently in development.	Contract awards: To be confirmed	\$800,000	March 22	Availability of resources

PROJECTS/PROGRAMME WORKS						
ACTIVITY	PROJECT LEAD	PROGRAMME PROGRESS	COUNCIL DECISION POINTS	BUDGET	COMPLETION	RISK
Sediment Removal from Urban Streams	David Hopman	Provides for sediment removal from problematic urban streams to improve their capacity to reticulate stormwater Specifications currently in development.		\$200,000	March 22	Availability of resources
PROJECT DELIVERY						
Civic Centre	Sofia Craig	LTP consultation material including artistic impressions finalised. Expression of Interest (EOI) launched on GETS for Quantity Surveying services due to close on 19 March.	LTP adoption	\$30.8 Million	2026	Decision making
Masterton Revamp	Sofia Craig	Design work progressing for a number of packages of work to be completed by the end of Q2 2021. Launch of registrations for Community Reference Group due to close on 15 March.	Appointment of main contractor in Q2. Approval of concept designs.	To be confirmed as part of LTP.	2031	Availability of NZTA funding to deliver the work
Animal Shelter	Rose O'Neill	Developed design package underway. Vacation schedule for current premises and business continuity plans well underway. Resources for demolition and construction have been secured and planning underway for construction commencement date.	Approval of budget increase as part of LTP.	\$1.46 million	Q4 2021	Budget provision is insufficient

PROJECTS/PROGRAMME WORKS						
ACTIVITY	PROJECT LEAD	PROGRAMME PROGRESS	COUNCIL DECISION POINTS	BUDGET	COMPLETION	RISK
Skatepark Revamp	Rose O'Neill	Detailed design package has been finalised and tender for a main construction contractor is out on GETS currently and due to close on 15 March. Once contracts are signed, demolition will commence as priority and all tenderers have indicated an ability to start as soon as possible.	Approval of budget increase as part of LTP.	\$1.3 million	Q1 2022	Budget provision is insufficient
Hood Aerodrome	Martyn Round	Beca have been appointed as the consultant to lead the master planning exercise and work has commenced. Security upgrades are nearing completion and the next key upgrade will be to the refuelling site. We are currently in negotiations with providers to do this work following the closure of our RFP.	Approval of budget provision as part of LTP.	\$17 million	Q1 2026	Stakeholder engagement
Henley Lake Dump Station	Martyn Round	ON HOLD: The Henley Lake Dump Station site is currently on hold pending Iwi engagement.				
Waipoua Bridge	Martyn Round	Abseil Access are the nominated design and build contractor and design work is underway. We have also engaged an Iwi Artist Coordinator who has commenced work on integrating Iwi artwork into the construction of the bridge.	Nothing significant	\$300,000	Q3 2021	Floodplain management discussions with GWRC to be resolved.

361

PROJECTS/PROGRAMME WORKS						
ACTIVITY	PROJECT LEAD	PROGRAMME PROGRESS	COUNCIL DECISION POINTS	BUDGET	COMPLETION	RISK
Queen Elizabeth Park Lake	Phil Evans	<p>Discussing with GWRC option to align requirements under current consent due to expire in 2023, (first part due to expire in Sept 2020). This will require a variation to existing consent.</p> <p>Next steps:</p> <ul style="list-style-type: none"> • Draft variation to consent • Scope design and investigate work. 	Approval of budget provision as part of LTP.	To be confirmed	2023	Decision making
Five Towns Trail	Sofia Craig	No new updates	To be confirmed	To be confirmed	To be confirmed	