



Mataikona Road: Emerging Preferred Option

A close-up photograph of a person's hands weaving a basket. The hands are positioned in the center-right of the frame, with fingers deftly manipulating long, thin, light-brown reeds. The basket's structure is a complex, interlocking weave of these reeds, creating a textured, grid-like pattern. The lighting is soft and focused, highlighting the texture of the reeds and the skin of the hands. The background is dark and out of focus, emphasizing the intricate craft.

Karakia timatanga

**Kia tau ngā manaakitanga a te mea
ngaro**

ki runga ki tēnā, ki tēnā o tātou

Kia mahea te hua mākihikihi

**kia toi te kupu, toi te mana, toi te
aroha, toi te Reo Māori**

**kia tūturu, ka whakamaua kia tīna!
Tīna!**

Hui e, Tāiki e!



Agenda

Welcome/ Introductions

Background

- ILM
- Community feedback
- Assessment process
- Option descriptions

Options Assessment

- MCA Criteria
- MCA Scoring
- Indicative economics

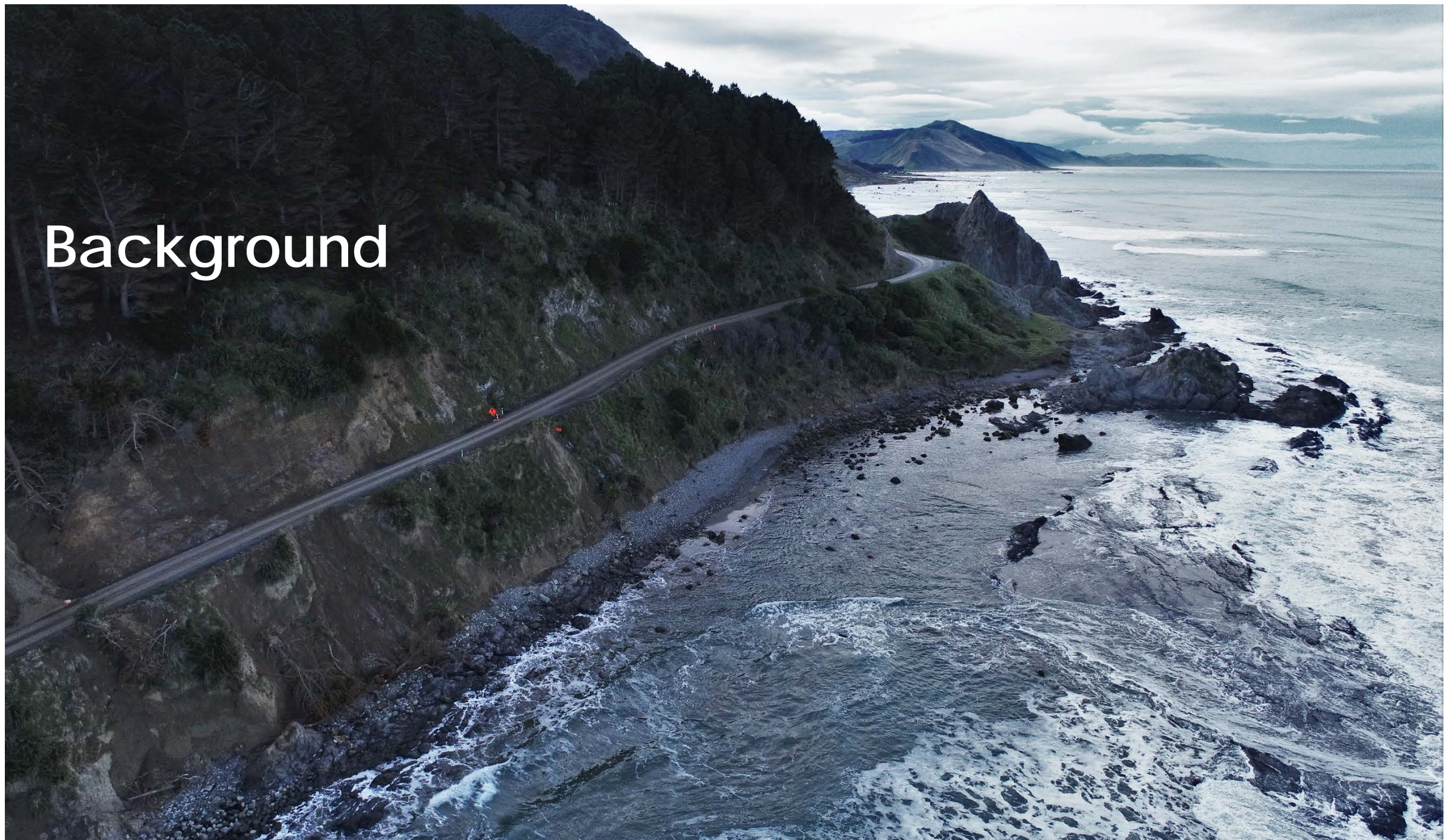
Your feedback

- Risks
- Preferences

Next Steps

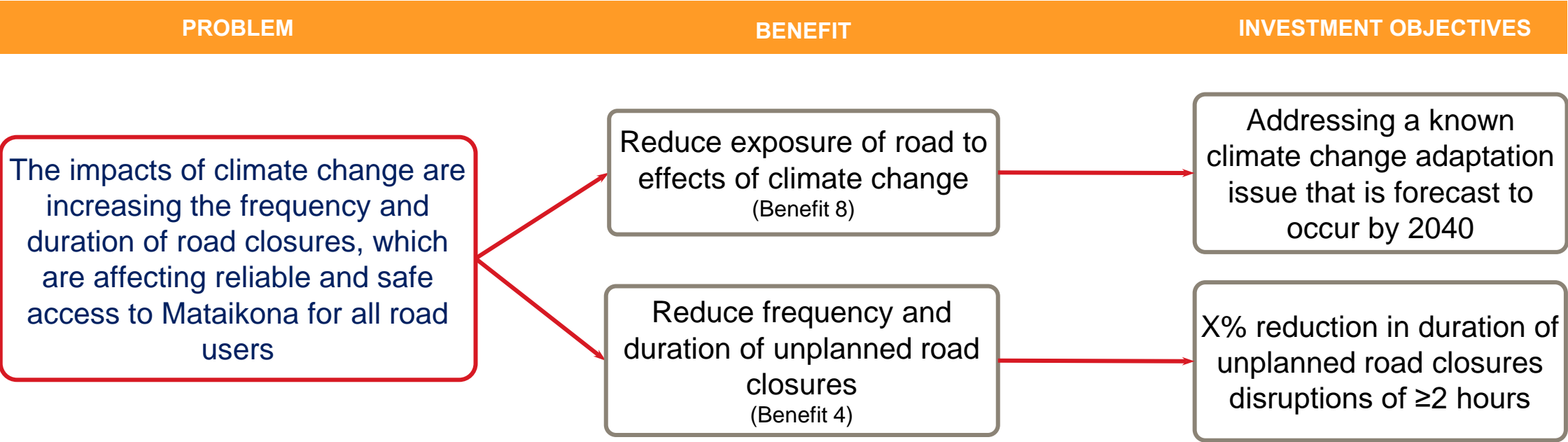


Background





Investment Logic Map



Opportunity
Improve road user safety on Mataikona Road

Note: Benefits are aligned with Waka Kotahi's Land Transport Benefits Framework. Benefit numbers refer to the relevant benefit within the framework.



Community feedback

31 feedback forms received

65 survey responses received

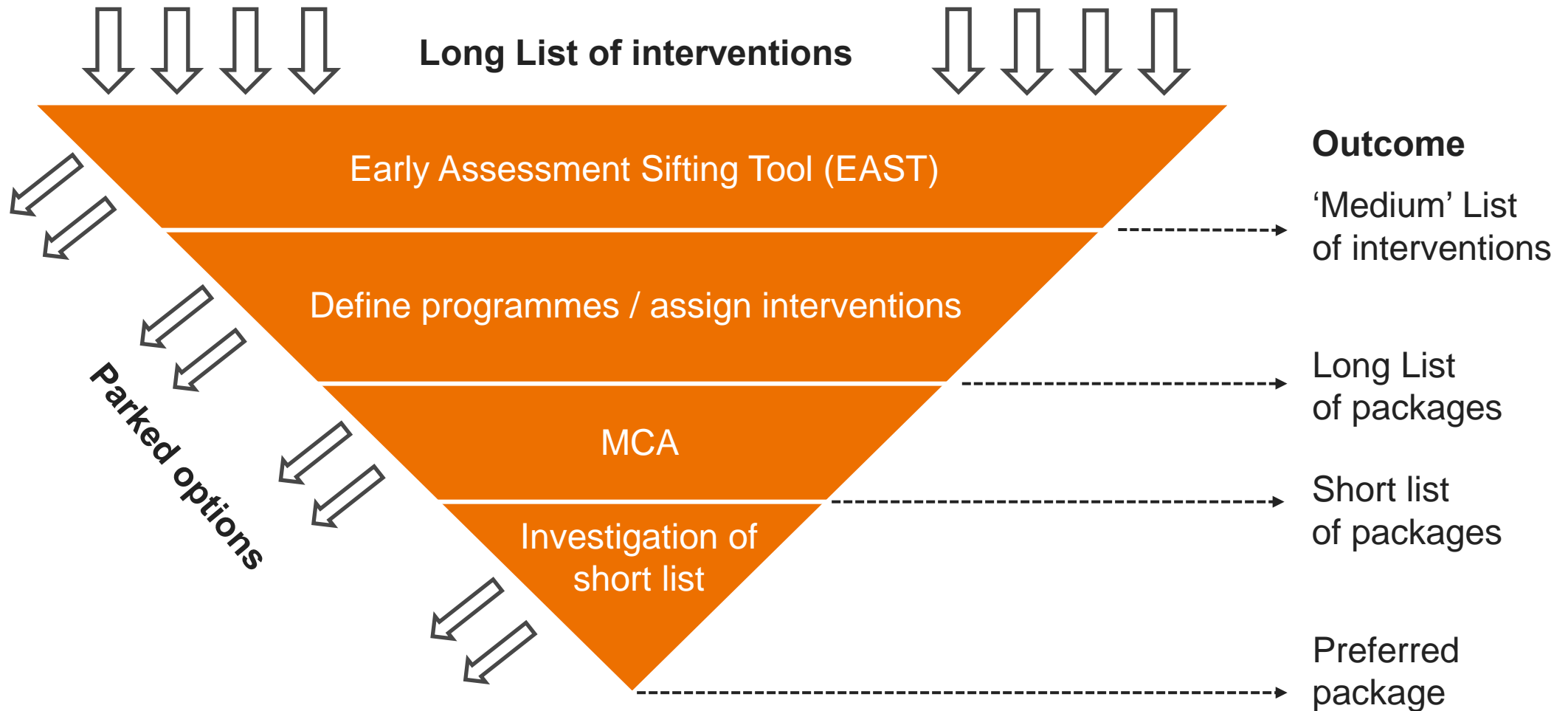
Topics of concern included:

- Seal level rise
- Coastal erosion
- Weather events
- Slips and dropouts
- Road closures
- Waio Hill
- Pack Spur Road
- Emergency response access
- Maintenance costs
- Safety





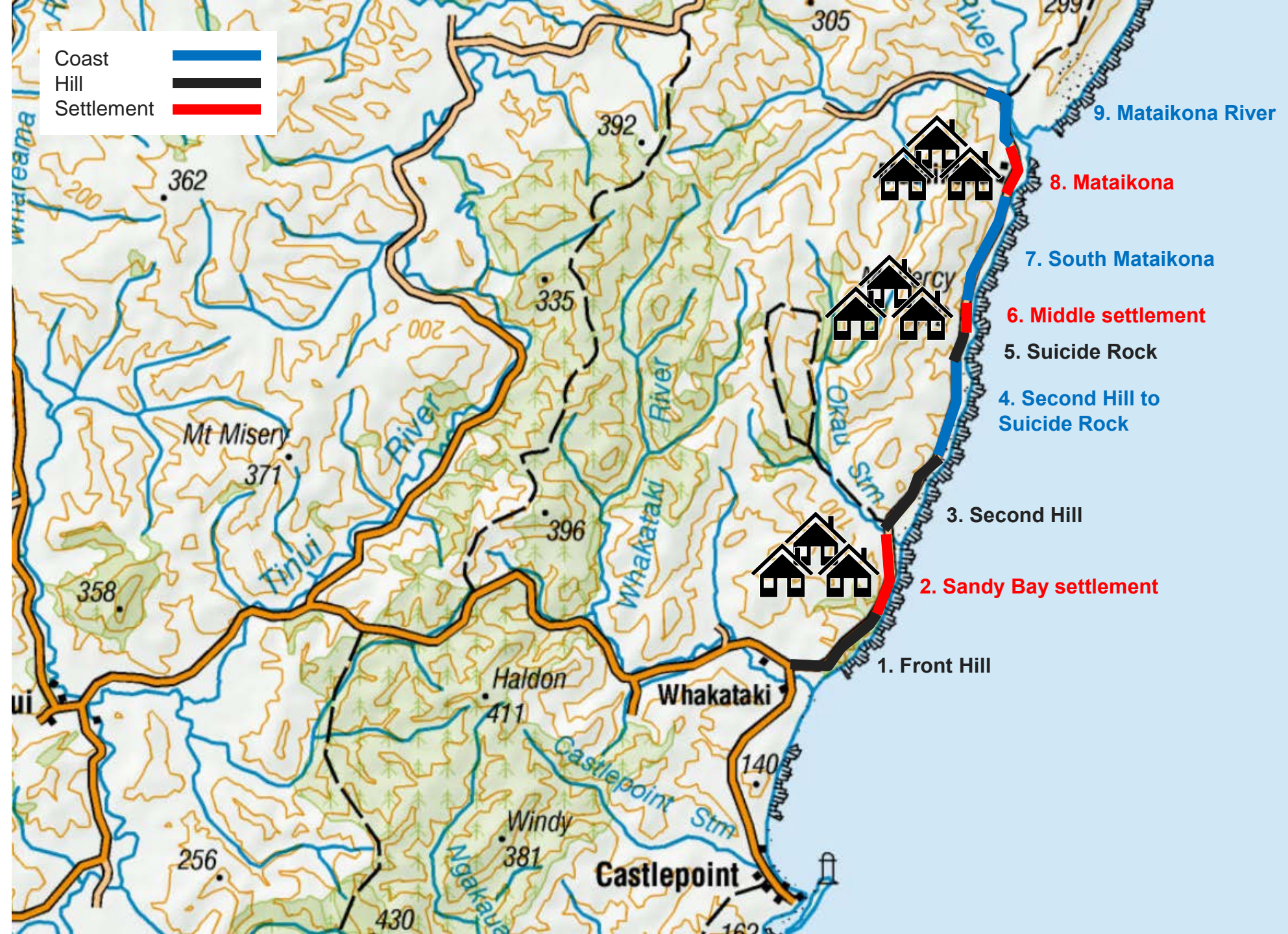
Assessment Process





Road Sections

1. Front Hill
2. Sandy Bay settlement
3. Second Hill
4. Second Hill to Suicide Rock
5. Suicide Rock
6. Middle settlement
7. South Mataikona
8. Mataikona
9. Mataikona River





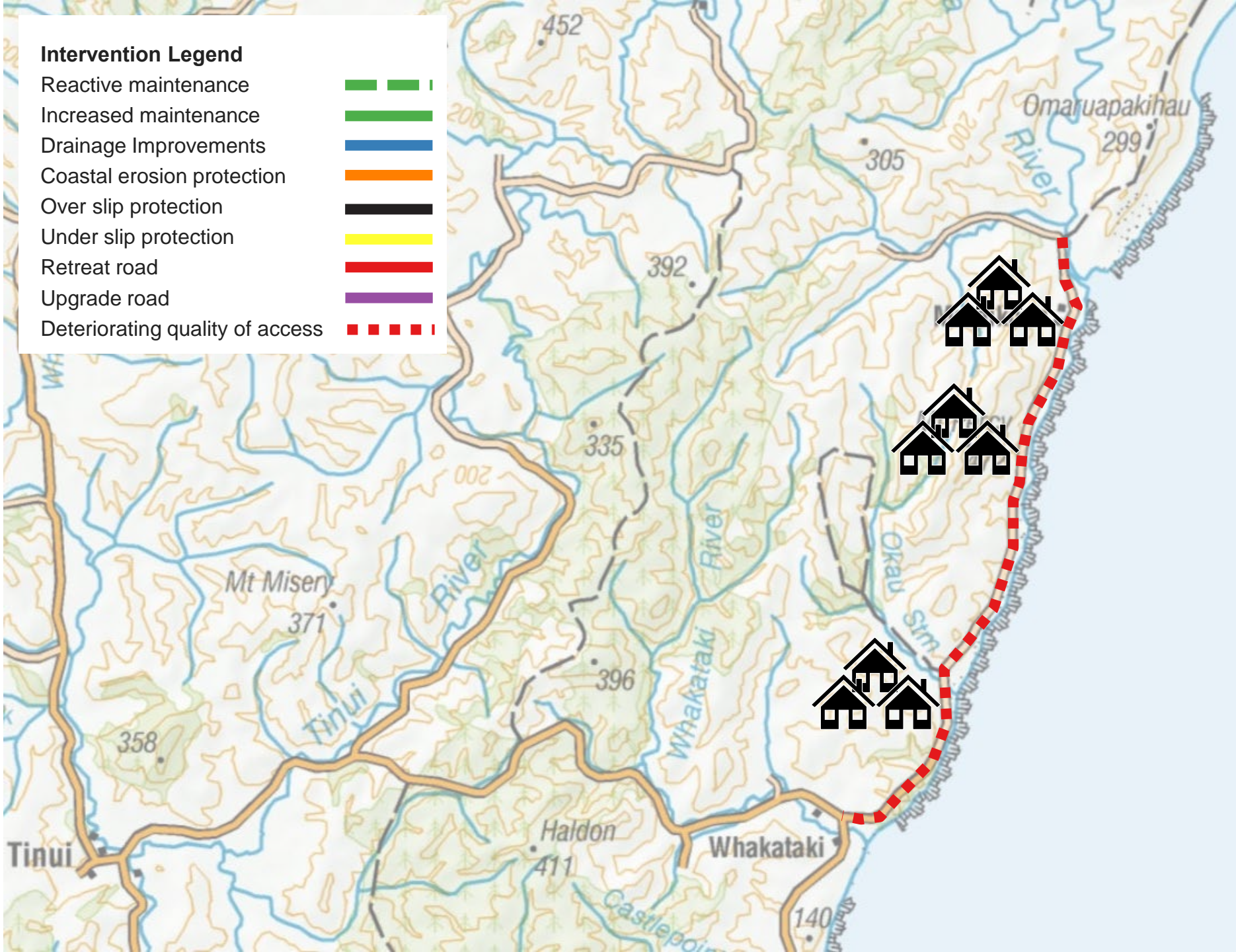
Option Descriptions

Package	Description
1. Do Nothing	Continue with reactive maintenance, but not necessarily restoring road to pre-damaged standard.
2. Do Minimum	Continue with reactive maintenance, but not necessarily restoring road to pre-damaged standard after 2032.
3. Minor Improvements	Preventative maintenance, and proactively rock armor a small number of key sites.
4. Retreat	Retreat the road inland where there is space to do so. Maintain the remainder of the road with reactive maintenance.
5. Strengthen	Address all problem areas along Mataikona Road with long term solutions
6. Optimised (low cost)	A tailored programme of low-cost interventions that best address the problems in each section of Mataikona Road in the medium term.
7. Optimised (high cost)	A tailored programme of high-cost interventions that best address the problems in each section of Mataikona Road in the long term.
8. Alternate Route One	Upgrade Pack Spur Road and strengthen the Mataikona River section. Mataikona Road between Sandy Bay and the middle settlement will continue with reactive maintenance, but not necessarily restoring road to pre-damaged standard.
9. Alternate Route Two	Upgrade Pack Spur Road and strengthen the Mataikona River section. Mataikona Road between Sandy Bay and Mataikona will continue with reactive maintenance, but not necessarily restoring road to pre-damaged standard.
10. Alternate Route Three	Upgrade Pack Spur Road and strengthen the Mataikona River section. Mataikona Road south of Mataikona will continue with reactive maintenance, but not necessarily restoring road to pre-damaged standard.



Do Nothing

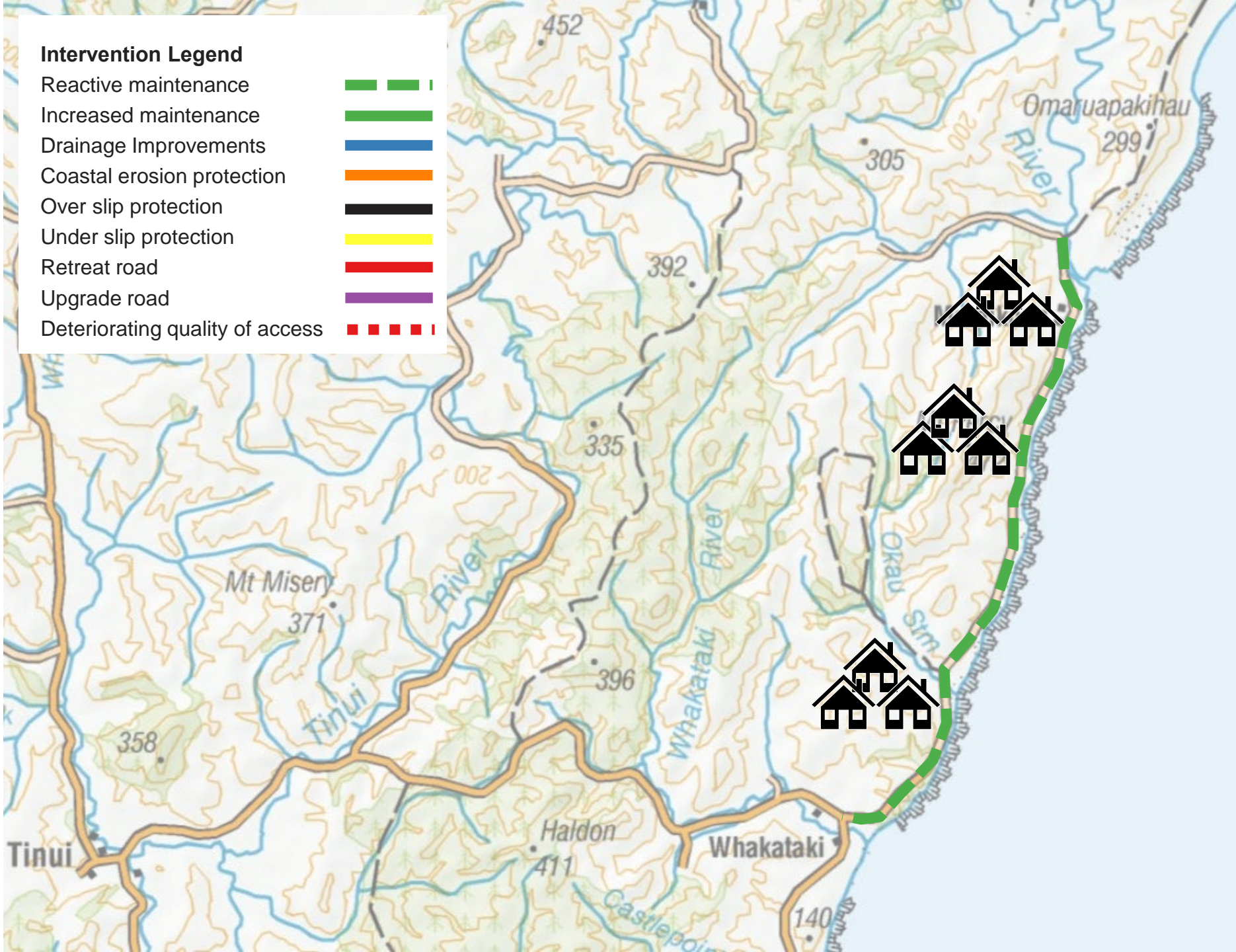
Acceptance that key sections of the corridor cannot be protected against natural hazards, and access can no longer be guaranteed. Continue with reactive maintenance, but not necessarily restoring road to pre-damaged standard.





Do Minimum

Plan for periodic disruption and trigger reactive response to natural hazards through emergency spend funding to maintain access along the corridor, but not necessarily restoring road to pre-damaged standard after 2032.

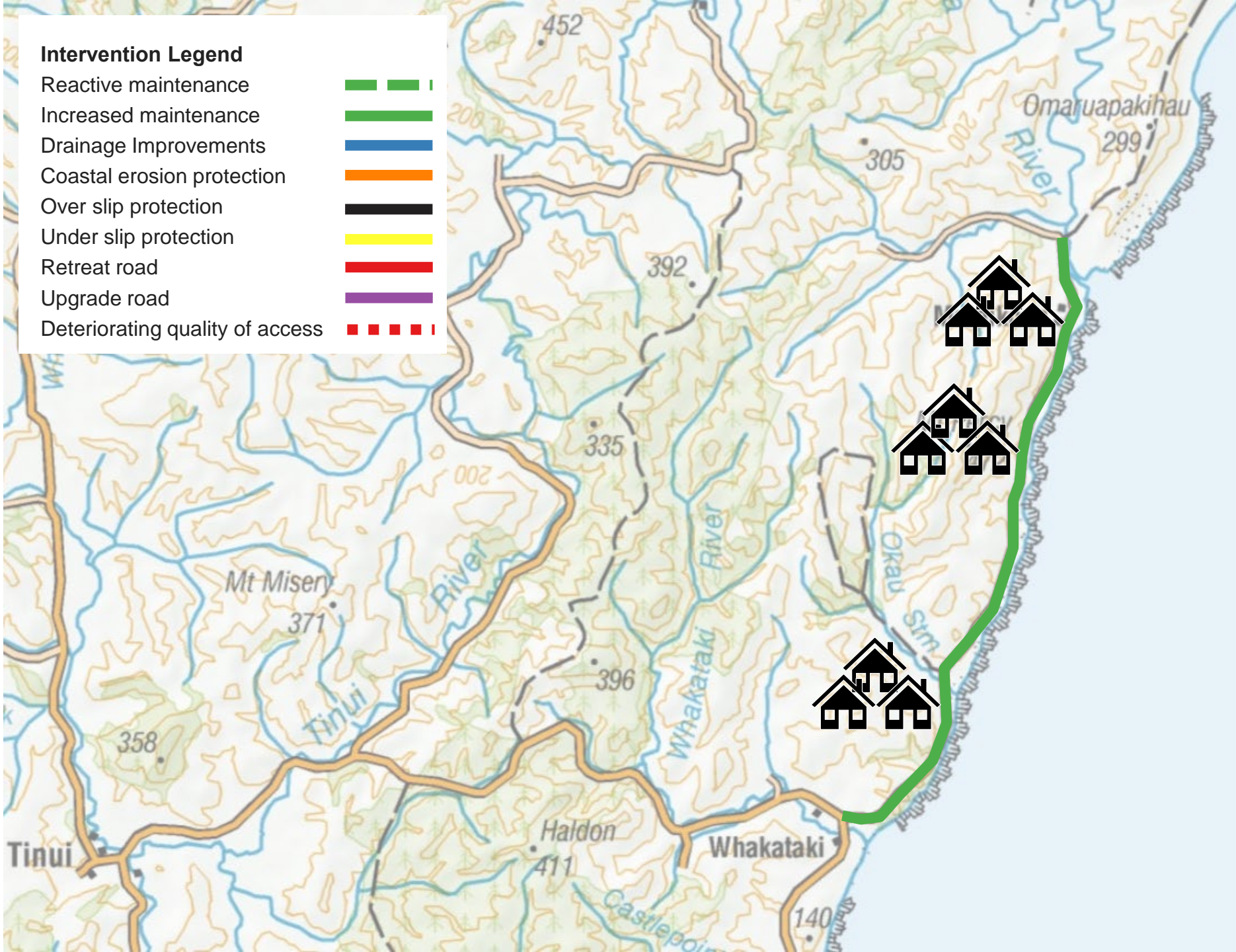




Minor Improvements

Increase preventative maintenance along Mataikona Road (drainage improvements, clean out culverts prior to storm events, etc).

Small fund for targeted rock armoring (or other appropriate strengthening works)



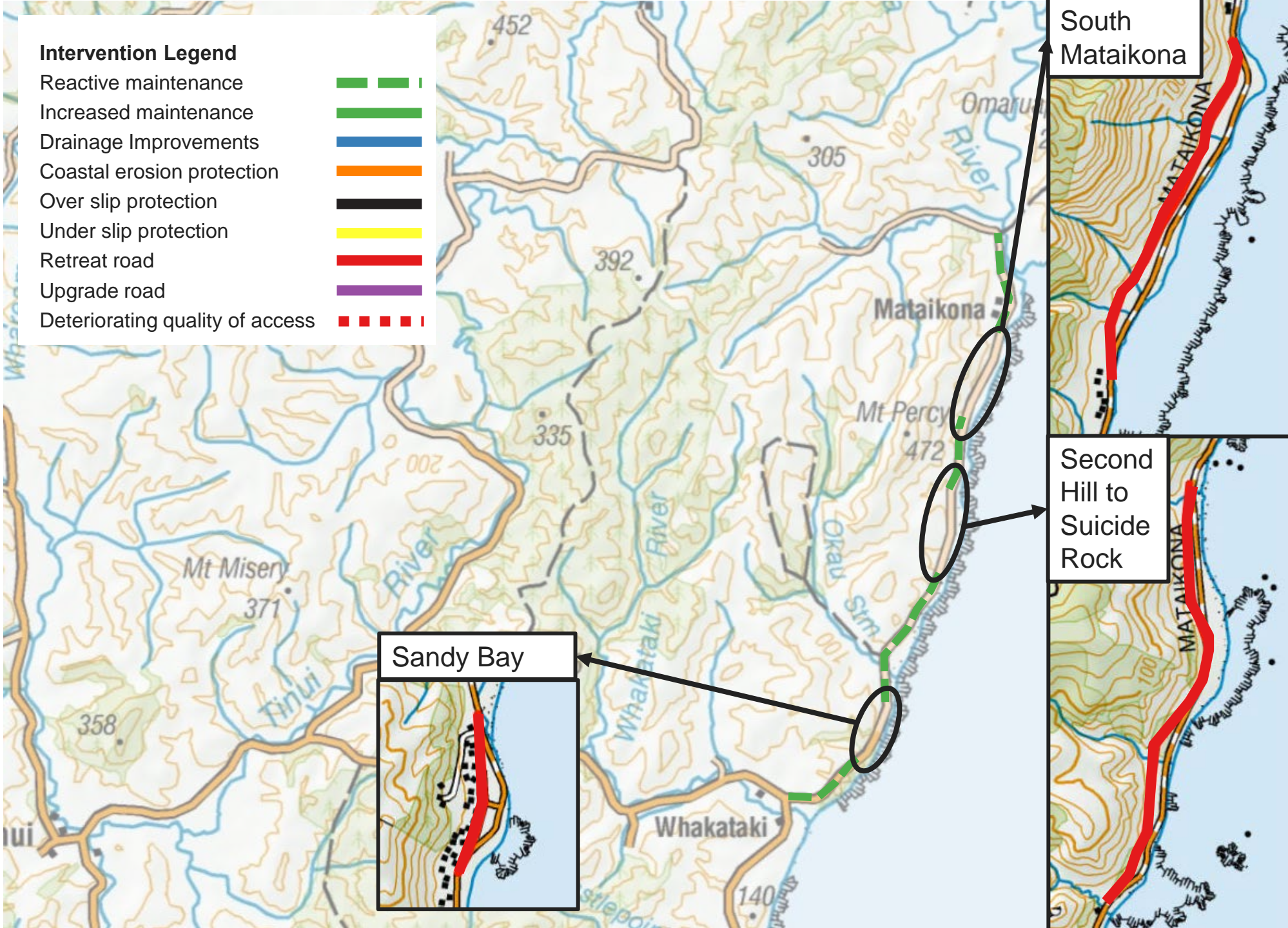


Retreat

Retreat the road inland where there is space to do so but maintain the alignment in front of the three settlements. Maintain the remainder of the road as per the Do Minimum.

Retreat Road at:

- Sandy Bay,
- Second Hill to Suicide Rock and
- South Mataikona



Intervention Legend	
Reactive maintenance	
Increased maintenance	
Drainage Improvements	
Coastal erosion protection	
Over slip protection	
Under slip protection	
Retreat road	
Upgrade road	
Deteriorating quality of access	



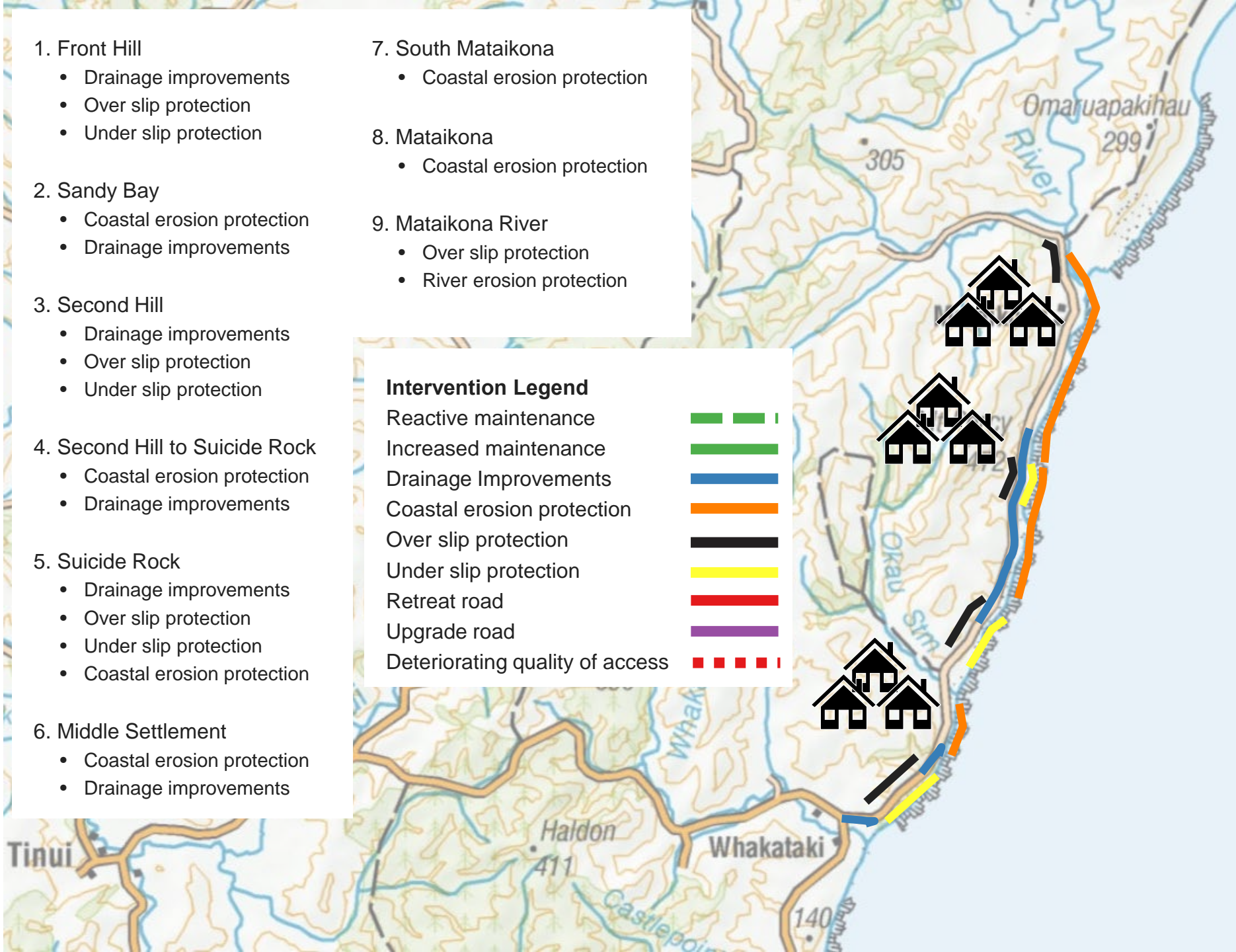
Strengthen

Complete longer-term repairs for over slips, under slips and coastal erosion in all areas of concern along the length of Mataikona Road.

- 1. Front Hill
 - Drainage improvements
 - Over slip protection
 - Under slip protection
- 2. Sandy Bay
 - Coastal erosion protection
 - Drainage improvements
- 3. Second Hill
 - Drainage improvements
 - Over slip protection
 - Under slip protection
- 4. Second Hill to Suicide Rock
 - Coastal erosion protection
 - Drainage improvements
- 5. Suicide Rock
 - Drainage improvements
 - Over slip protection
 - Under slip protection
 - Coastal erosion protection
- 6. Middle Settlement
 - Coastal erosion protection
 - Drainage improvements
- 7. South Mataikona
 - Coastal erosion protection
- 8. Mataikona
 - Coastal erosion protection
- 9. Mataikona River
 - Over slip protection
 - River erosion protection

Intervention Legend

Reactive maintenance	
Increased maintenance	
Drainage Improvements	
Coastal erosion protection	
Over slip protection	
Under slip protection	
Retreat road	
Upgrade road	
Deteriorating quality of access	



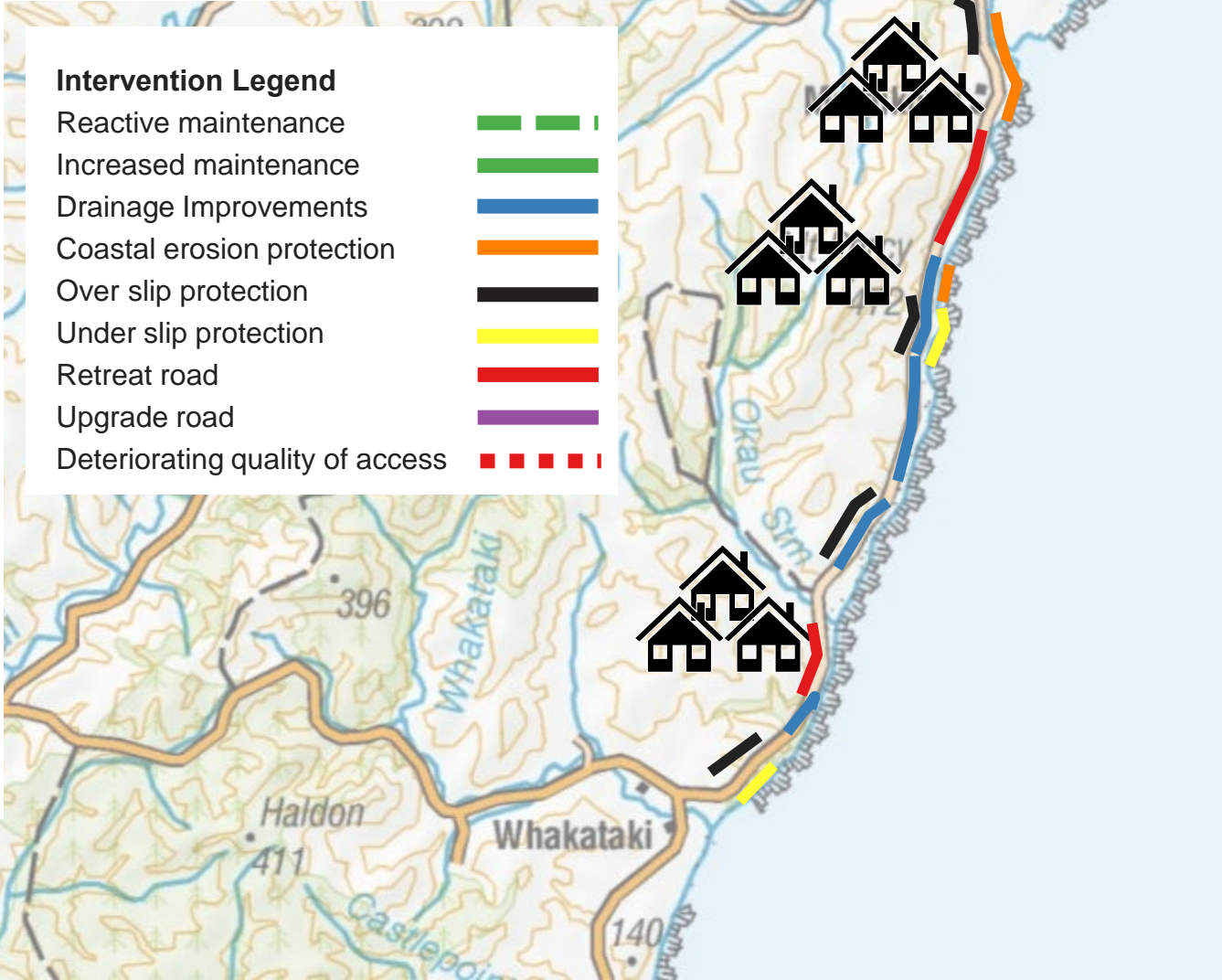


Optimised (low cost)

A tailored programme of low-cost interventions that best address the problems in each section of Mataikona Road in the medium term

1. Front Hill
 - Drainage improvements
 - Over slip protection
 - Under slip protection
2. Sandy Bay
 - Retreat road
 - Drainage improvements
3. Second Hill
 - Drainage improvements
 - Over slip protection
4. Second Hill to Suicide Rock
 - Drainage improvements
5. Suicide Rock
 - Drainage improvements
 - Over slip protection
 - Under slip protection/ Coastal erosion protection
6. Middle Settlement
 - Coastal erosion protection
 - Drainage improvements
7. South Mataikona
 - Retreat road

8. Mataikona
 - Coastal erosion protection
9. Mataikona River
 - Over slip protection
 - Under slip/ river erosion protection



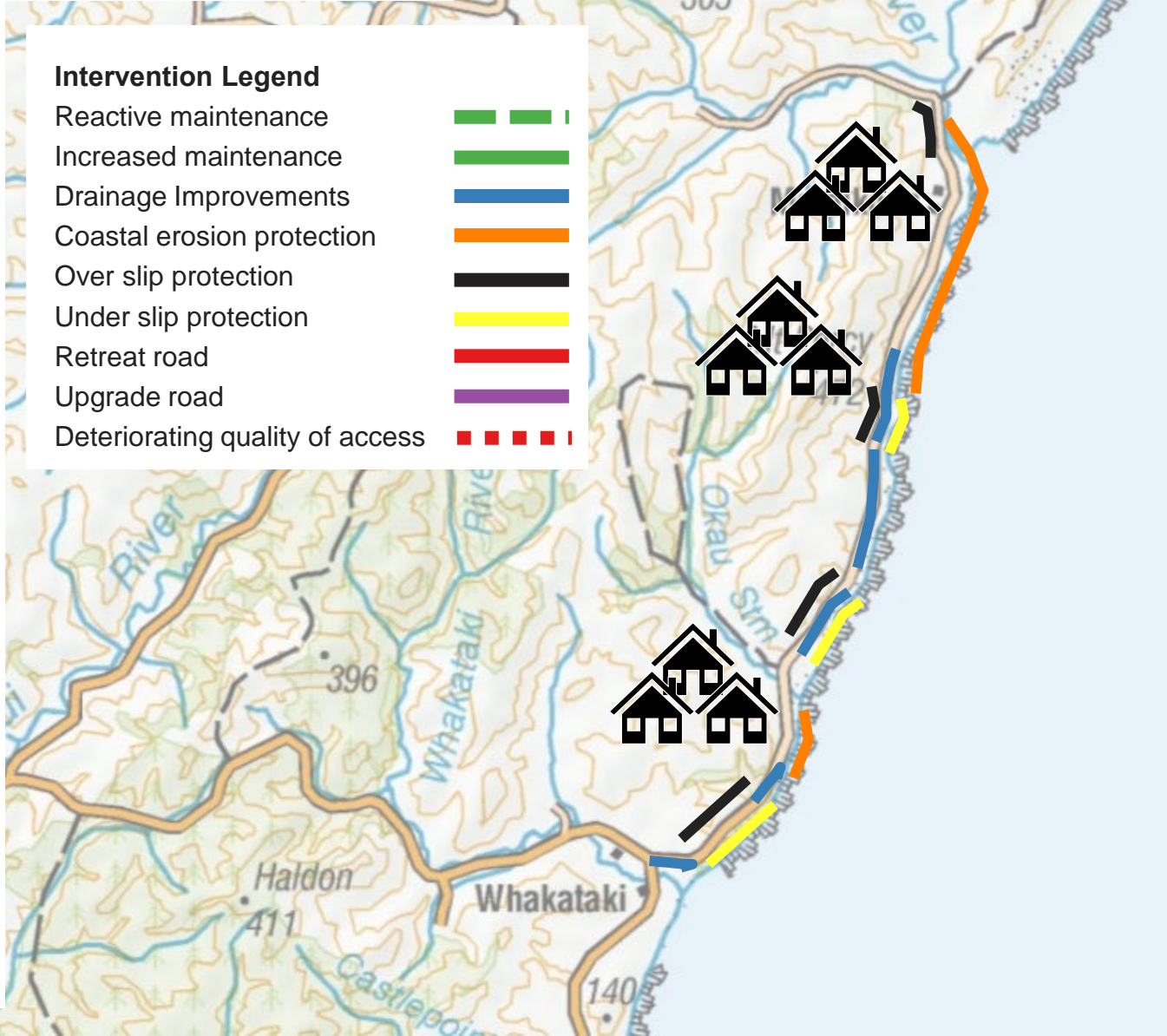


Optimised (high cost)

A tailored programme of high-cost interventions that best address the problems in each section of Mataikona Road in the long term.

1. Front Hill
 - Drainage improvements
 - Over slip protection
 - Under slip protection
2. Sandy Bay
 - Coastal erosion protection
3. Second Hill
 - Drainage improvements
 - Over slip protection
 - Under slip protection
4. Second Hill to Suicide Rock
 - Drainage improvements
5. Suicide Rock
 - Drainage improvements
 - Over slip protection
 - Under slip protection/ Coastal erosion protection
6. Middle Settlement
 - Coastal erosion protection
 - Drainage improvements
7. South Mataikona
 - Coastal erosion protection
8. Mataikona
 - Coastal erosion protection

9. Mataikona River
 - Over slip protection
 - Under slip/ river erosion protection



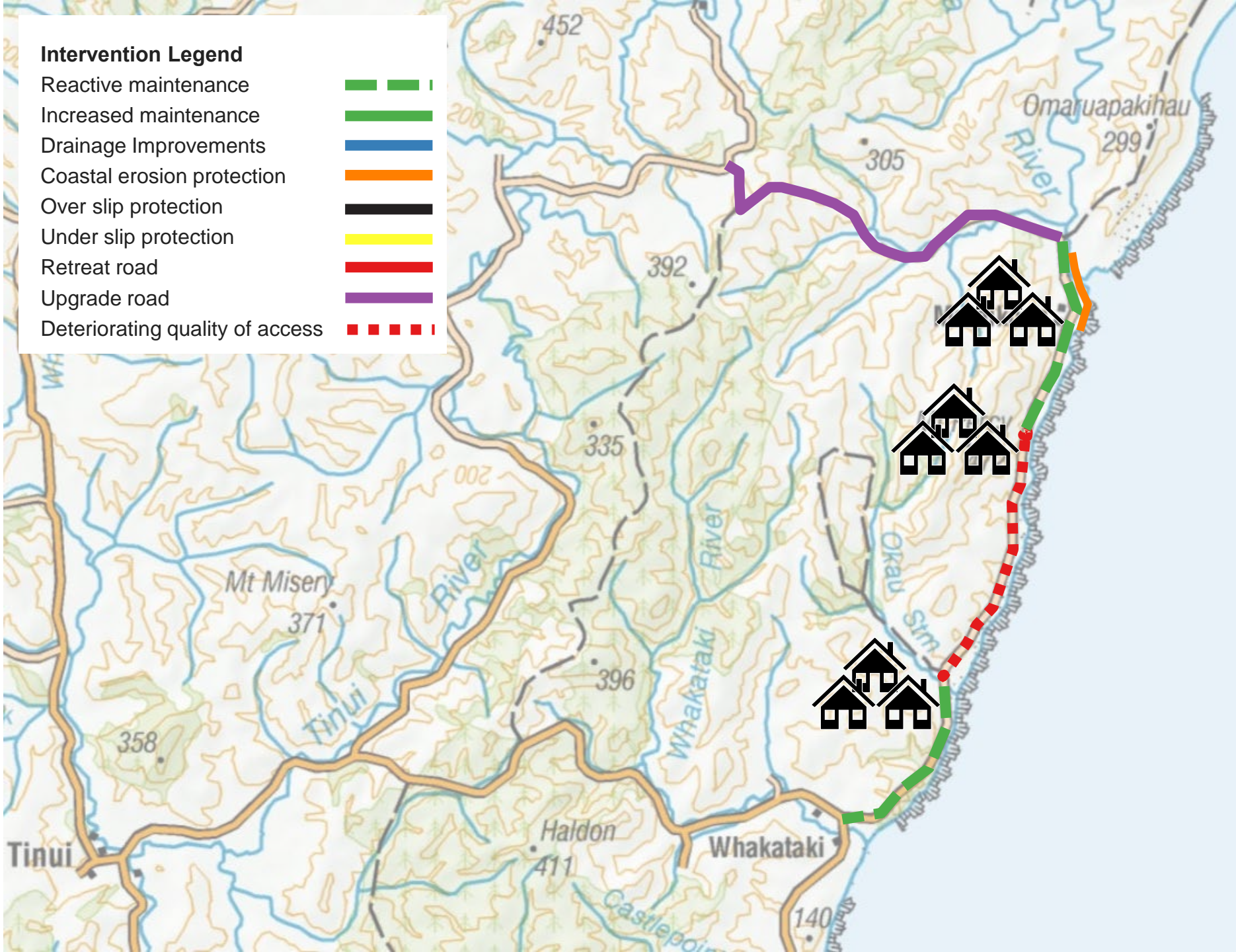


Alternative Route 1

Upgrade Pack Spur Road so it is accessible for light vehicles in most weather conditions. Protect the Mataikona River section from erosion.

Mataikona Road between Whakataki and Sandy Bay, and Mataokona and the middle settlement will receive reactive maintenance, but not necessarily restoring the road to the pre-damaged standard after 2023.

Mataikona Road between Sandy Bay and the middle settlement will continue with reactive maintenance, but not necessarily restoring road to pre-damaged standard.



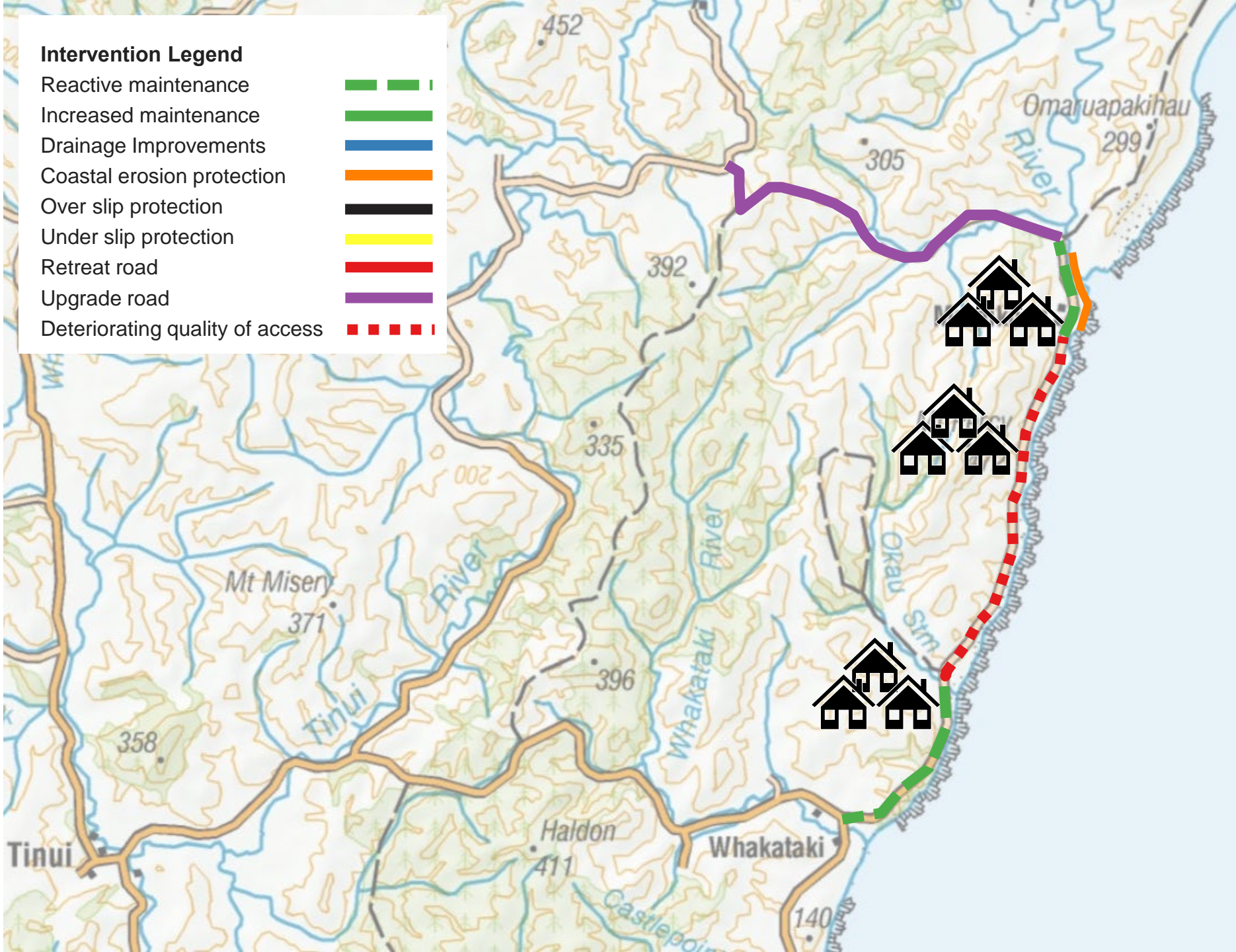


Alternative Route 2

Upgrade Pack Spur Road so it is accessible for light vehicles in most weather conditions. Protect the Mataikona River section from erosion.

Mataikona Road between Whakataki and Sandy Bay will receive reactive maintenance, but not necessarily restoring the road to the pre-damaged standard after 2023.

Mataikona Road between Sandy Bay and Mataikona will continue with reactive maintenance, but not necessarily restoring road to pre-damaged standard.

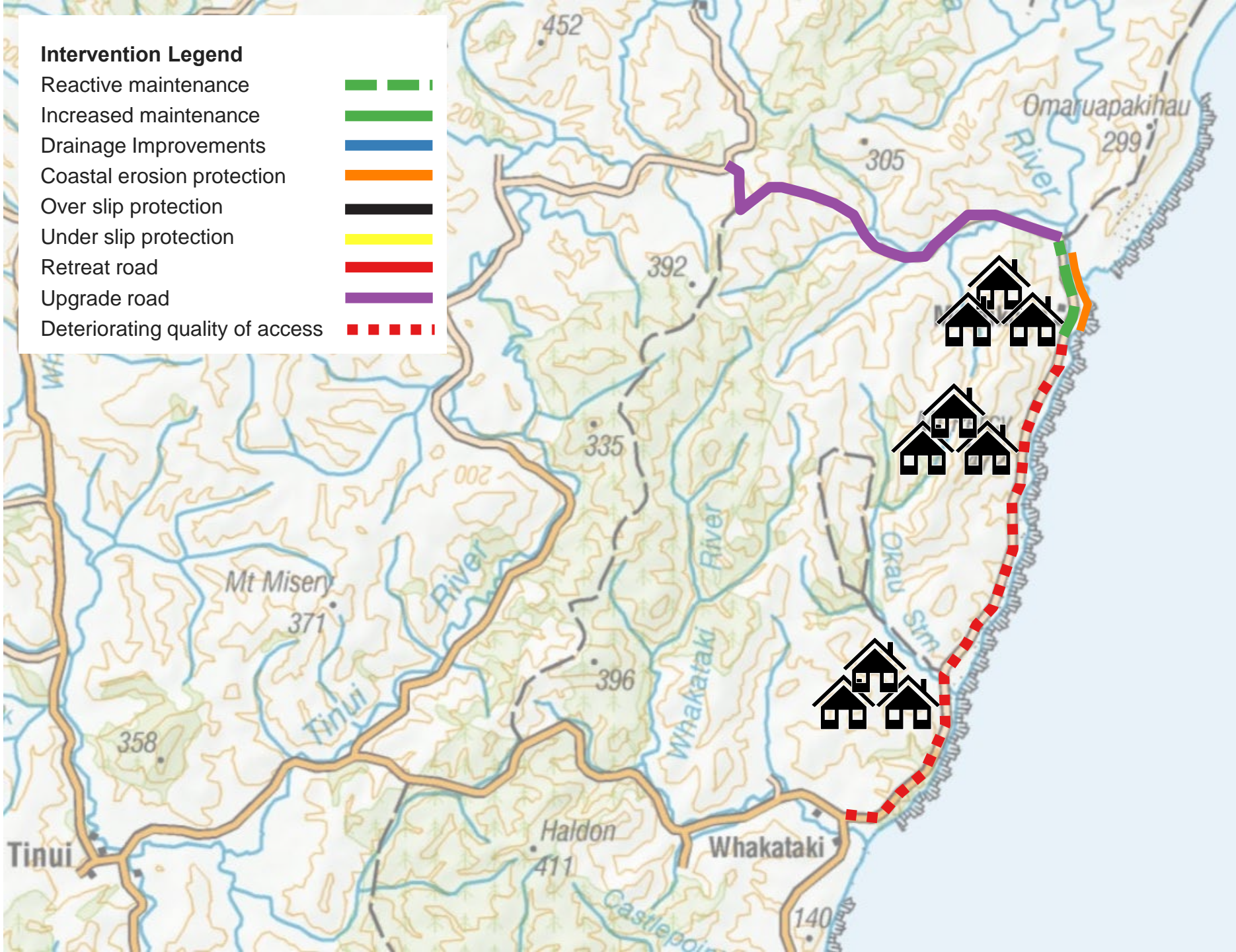




Alternative Route 3

Upgrade Pack Spur Road so it is accessible for light vehicles in most weather conditions. Protect the Mataikona River section from erosion.

Mataikona Road between Whakataki and Mataikona will continue with reactive maintenance, but not necessarily restoring road to pre-damaged standard.





Options Assessment





MCA Criteria

Theme	Criteria	Description
Investment Objectives (40%)	Addresses a known climate change adaptation issue (60%)	Does the option reduce exposure to climate change risk or other natural hazards over time?
	Reduction in duration of unplanned road closures (40%)	Does the option reduce the occurrence of unplanned road closures, or reduce the duration of unplanned road closures?
Wellbeings (20%)	Natural environment (40%)	How well does the option avoid or minimize adverse effects on the natural environment?
	Social and community (40%)	To what extent does the scheme effect social and community values, such as feelings of community and access to emergency services?
	Economic development and growth (20%)	How well will the option support the population and economic growth?
Critical Success Factors (40%)	Property impacts (50%)	What is the scale of property impacts? Can the necessary property rights be obtained? Does the option impact access?
	Technical difficulty (50%)	How difficult will the option be to design and construct? Are there any material supply constraints that will impact this?



Scoring

Option	Climate Change	Road Closures	Environment	Community	Economic	Property impacts	Technical difficulty	Rank
Do nothing	Red	Red	Yellow	Red	Red	Red	Green	10
Do minimum	Orange	Orange	Yellow	Orange	Orange	Orange	Green	9
Minor improvements	Orange	Light Orange	Yellow	Yellow	Light Orange	Yellow	Green	8
Retreat	Light Green	Light Green	Yellow	Light Green	Light Green	Orange	Light Green	4
Strengthen	Green	Green	Red	Green	Green	Green	Orange	2
Optimised (low cost)	Light Green	Light Green	Light Orange	Light Green	Light Green	Light Green	Light Green	2
Optimised (high cost)	Green	Green	Orange	Green	Green	Green	Light Orange	1
Alternate Route 1	Light Green	Light Green	Light Orange	Orange	Orange	Light Orange	Light Green	6
Alternate Route 2	Light Green	Light Green	Light Orange	Red	Orange	Orange	Light Green	5
Alternate Route 3	Light Green	Light Green	Light Orange	Red	Red	Red	Light Green	7

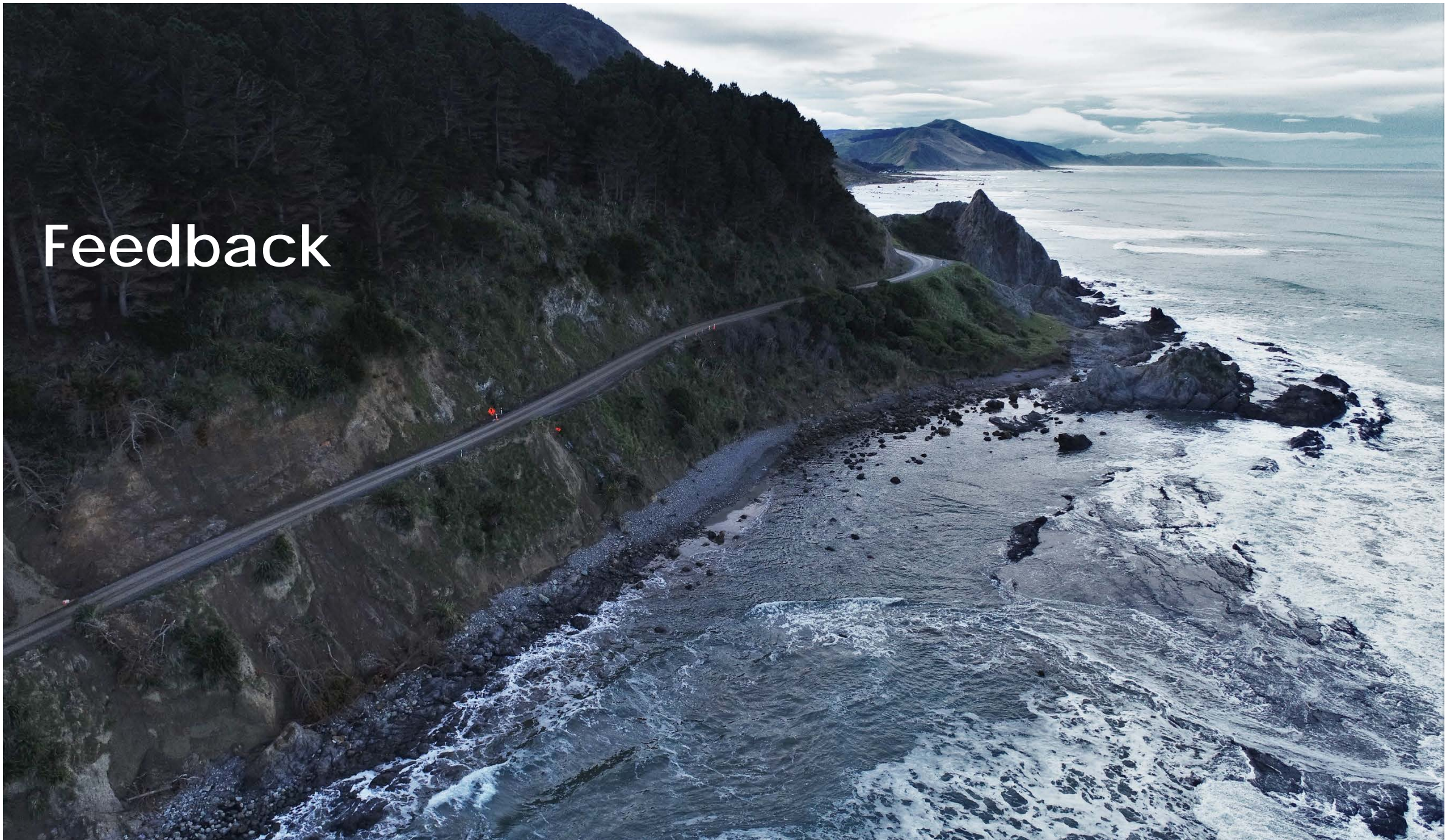


Indicative Economics

Package	Scoring			Assumptions		Benefit vs Cost Assessment				
	Kahungunu ki Wairarapa	Rangitane o Wairarapa	MCA	Deteriorating access	Disruption	Benefit	Capital Cost		Ratio	
							Low \$	High \$	High \$	Low \$
Do nothing	10	Yes	10	2027	Every year	\$12m	-	-	-	-
Do minimum	8	Yes	9	2032	Every year	\$12m	?	\$2m	-	6.5
Minor improvements	7	No	8	2040	8/10 years	\$14m	\$3m	\$30m	0.4	5.3
Retreat	8	Yes	4	2050	6/10 years	\$28m	\$3m	\$6m	5.1	7.7
Strengthen	1	Yes	2	2122	1/10 years	\$60m	\$70m	\$270m	0.2	0.9
Optimised (low cost)	1	No	2	2080	3/10 years	\$60m	\$30m	\$150m	0.4	1.7
Optimised (high cost)	3	Yes	1	2100	2/10 years	\$60m	\$70m	\$250m	0.2	0.9
Alternate Route 1	4	No	6	2080	4/10 years	\$60m	\$12m	\$25m	2.5	4.8
Alternate Route 2	4	No	5	2080	3 or 4/10 years	\$55m	\$13m	\$25m	2.1	4.1
Alternate Route 3	4	No	7	2100	3/10 years	\$35m	\$15m	\$30m	1.3	2.4

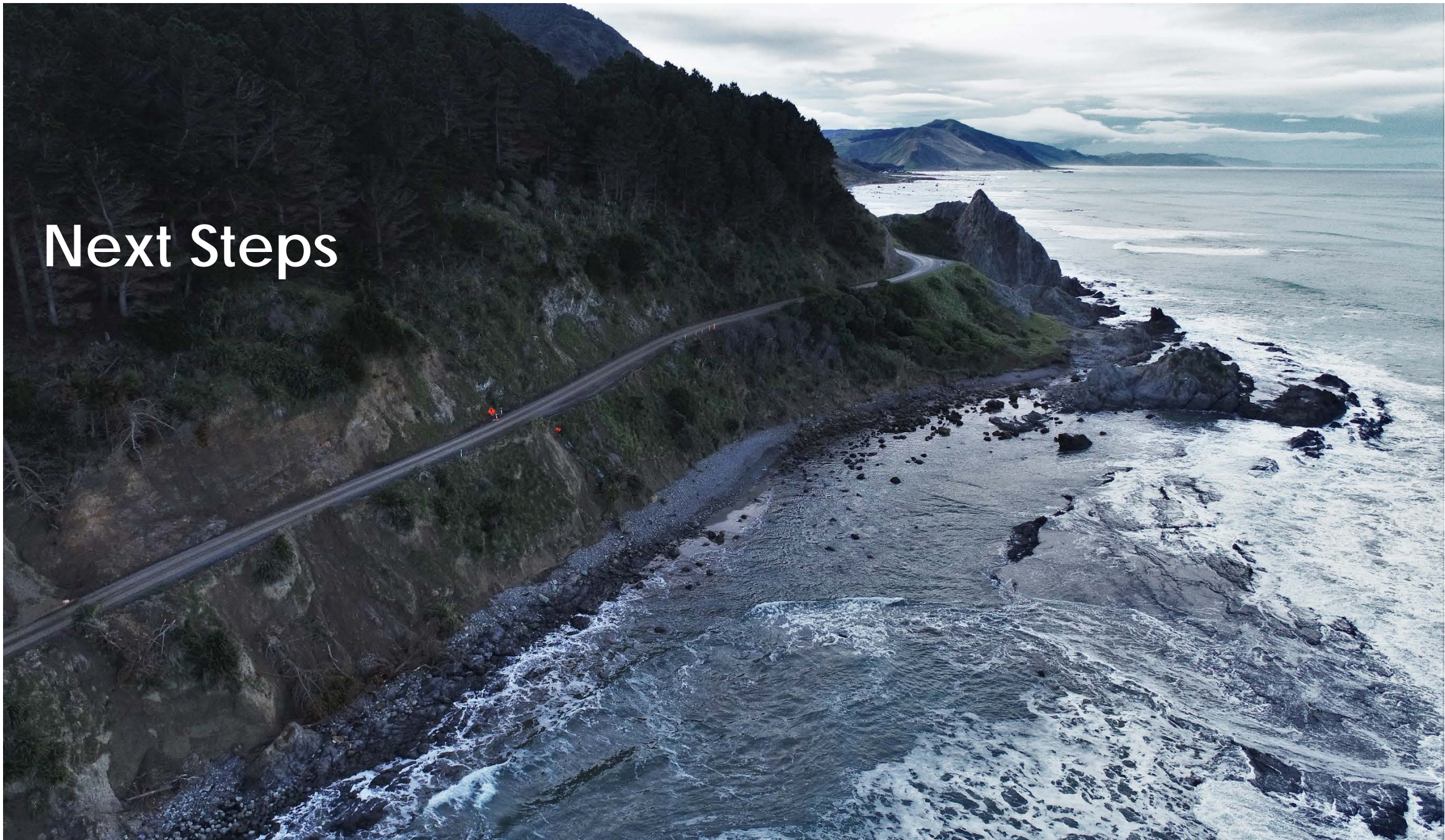


Feedback





Next Steps





Questions?

A close-up photograph of a person's hands weaving a basket. The hands are positioned in the center-right of the frame, with fingers deftly manipulating long, thin, light-colored fibers. The basket's structure is a complex, interlocking weave of these fibers, creating a textured, grid-like pattern. The lighting is soft and focused on the hands and the fibers, with the background being a blurred continuation of the weaving process. The overall tone is warm and natural, emphasizing the craft and the texture of the materials.

Karakia whakamutunga

**Kua mutu ā mātou
mahi** Our work has finished

Mō tēnei wā For the time being

**Manaakitia mai
mātou katoa** Protect us all

Ō mātou hoa Our Friends

Ō mātou whānau Our Family

Āio ki te Aorangi Peace to the universe



Providing resilient
and sustainable
access to
Mataikona