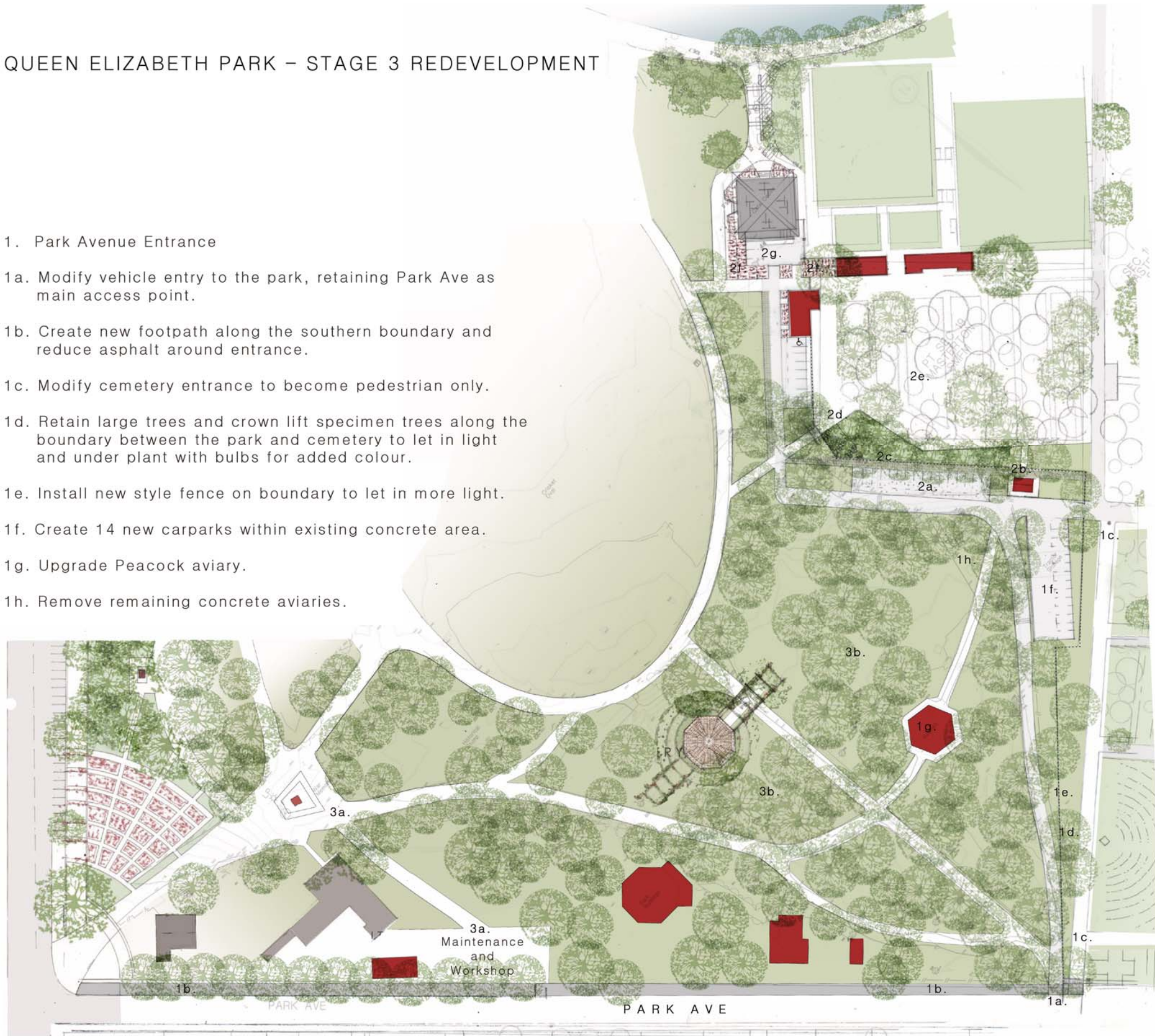


QUEEN ELIZABETH PARK – STAGE 3 REDEVELOPMENT

- 1. Park Avenue Entrance
 - 1a. Modify vehicle entry to the park, retaining Park Ave as main access point.
 - 1b. Create new footpath along the southern boundary and reduce asphalt around entrance.
 - 1c. Modify cemetery entrance to become pedestrian only.
 - 1d. Retain large trees and crown lift specimen trees along the boundary between the park and cemetery to let in light and under plant with bulbs for added colour.
 - 1e. Install new style fence on boundary to let in more light.
 - 1f. Create 14 new carparks within existing concrete area.
 - 1g. Upgrade Peacock aviary.
 - 1h. Remove remaining concrete aviaries.

- 2. Pioneer Cemetery
 - 2a. Create 16 new car parks on the former native aviary site.
 - 2b. Enhance the existing Grave Diggers Cottage.
 - 2c. Redefine boundary with new style fence around perimeter.
 - 2d. Reconfigure entrance.
 - 2e. Review existing vegetation and develop a vegetation management strategy for the future.
 - 2f. Establish new gardens under Redwoods and along southern edge of Cafe.
 - 2g. Service access to Cafe and Bowling Club.
- 3. Botanical Area – Herbaceous Border
 - 3a. Introduce new vehicle access from workshop and yard for parks and grounds staff.
 - 3b. Review vegetation and enhance botanical / woodland area with new plantings.



not to scale.



SPK Landscape Architecture